



FLEET LIST

VESSELS & EQUIPMENT

Updated 12/08/2020





BLADE RUNNER TWO



WILANNE



WILLPOWER



LILAH



WILLEDEAVOUR



WILLSUPPLY



WILLDART



WILJIVE



WILTANGO



WILCAT



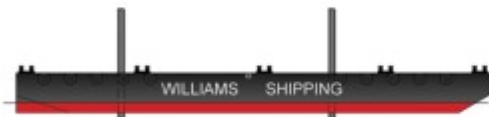
WILVENTURE II



WILLFETCH



WILWREN



WILCARRY 1750



WILCARRY 1717



WILCARRY 1711



WILCARRY 1500



WILCARRY 504



WILCARRY 503



WILCARRY 501



WILCARRY 350



WILCARRY 300



WILCARRY 250



WILCARRY 22

WILLIAMS SHIPPING MARINE LTD.
Tel: +44 (0) 23 8023 7330
Email: marine@williams-shipping.co.uk
Web: www.williams-shipping.co.uk

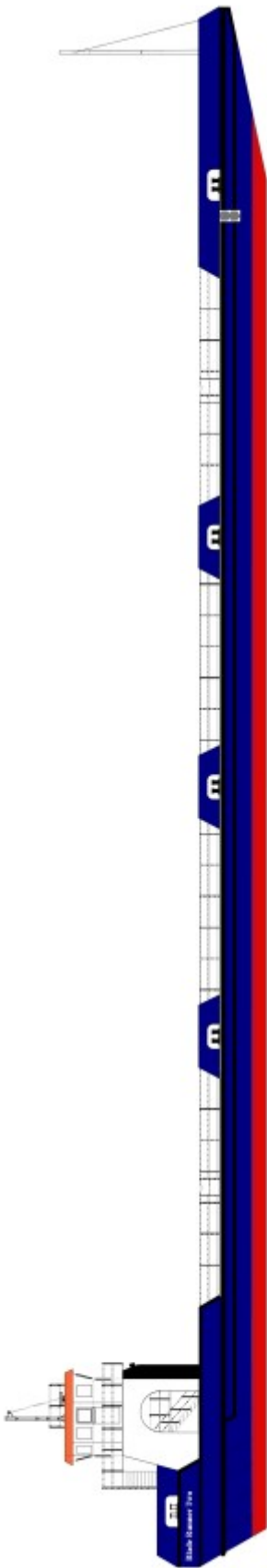
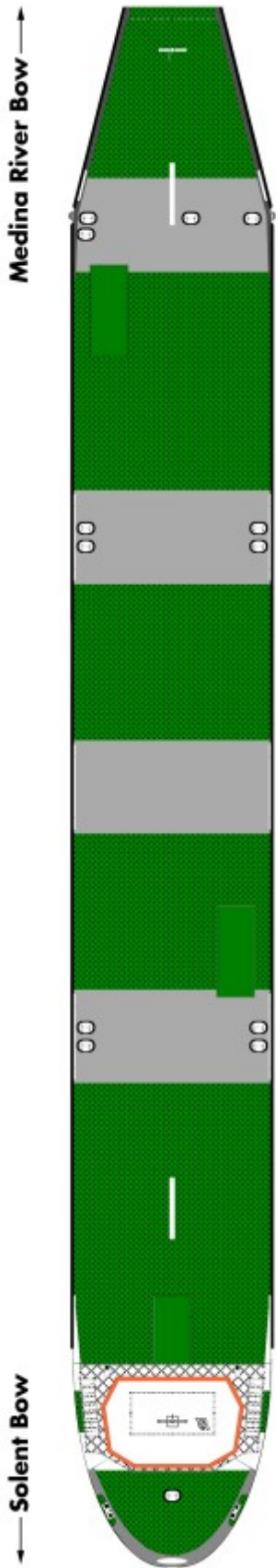


This specification booklet is for guidance only. Whilst every care is taken in the preparation of this specification, please check details before making any decisions reliant upon them. For detailed information in respect of loading and stability please consult the approved stability booklet.

Vessel Type	Vessel Name	Length / Breadth (m)	Page No.
MULTICAT / MULTIPURPOSE	Blade Runner Two	75.0 x 9.5	4
	Willendeavour	22.0 x 9.0	6
	Willsupply	20.0 x 7.0	8
	Wiljive	15.5 x 6.0	10
	Wiltango	15.5 x 6.0	12
	Willdart	14.5 x 4.9	14
	Wilcat	14.0 x 6.4	16
TUGS / WORKBOATS / LAUNCHES	Willpower	22.5 x 7.3	18
	Wilanne	16.9 x 5.3	20
	Lilah	16.0 x 5.0	22
	Wilventure II	12.9 x 4.3	24
	Willfetch	11.7 x 4.0	26
	Wilwren	9.2 x 3.0	28
PONTOONS / BARGES	Wilcarry 1750	45.0 x 20.0	30
	Wilcarry 1717	50.0 x 18.8	32
	Wilcarry 1711	50.0 x 18.8	34
	Wilcarry 1500	50.0 x 14.0	36
	Wilcarry 504	30.0 x 11.2	38
	Wilcarry 503	30.0 x 11.2	40
	Wilcarry 501	30.0 x 11.2	42
	Wilcarry 350	33.2 x 9.5	44
	Wilcarry 300	36.0 x 8.0	46
	Wilcarry 250	45.1 x 8.0	48
	Wilcarry 22	12.2 x 4.8	50
	Linkflotes		52
	RIBs		53
RIBS			
HYDRAULIC CRAWLER CRANES	70, 100, 130, 250t Cranes		54
OTHER EQUIPMENT	Winches, Spud lifters, Fenders, Containers		62

SHALLOW WATER BARGE

BLADE RUNNER TWO



SHALLOW WATER BARGE

BLADE RUNNER TWO



GENERAL

Type of Vessel:	Shallow water transport barge
Builder:	Aveco (Teeside) Ltd
Build Date, Place:	Teeside, UK, 2003
Classification:	Not classed. Specially designed for operation in Category D waters.
Certification:	Class IXA for Fire and LSA equipment.

DIMENSIONS

Length.:	75.00m
Moulded Beam:	9.50m
Moulded Depth:	2.25m
Loadline Length:	71.45m
Maximum Beam:	9.77m (inc fenders)
Light Draft:	0.45m at Medina Bow, 0.65 at Solent Bow
Loaded Draft:	0.60m at Medina Bow, 0.75m at Solent Bow

Net Registered Tonnage:	124.00 tonnes
Gross Tonnage:	416 tonnes

PERFORMANCE

Speed:	7.5—8.7 knots (approx.)
--------	-------------------------

DECK CAPACITY

Useable Storage	
Capacity on Deck:	550m ²
Max Cargo Weight:	180 tonnes
Max Deck Load (Point Load):	2.5 tonne / m ²
	Local strengthening 5 tonne / m ² between raised bulwarks at three positions along the length of the deck

PROPULSION SYSTEM

Propulsion:	2 No Schottel SPJ82RD Pumpjets, each driven by Scania DI12 Diesel Engines (265KW @ 1800) 1 No Schottel SPJ57RD Pumpjet, driven by Scania D9-93M Diesel Engine (189KW @ 1900)
-------------	---

ANCILLARY MACHINERY

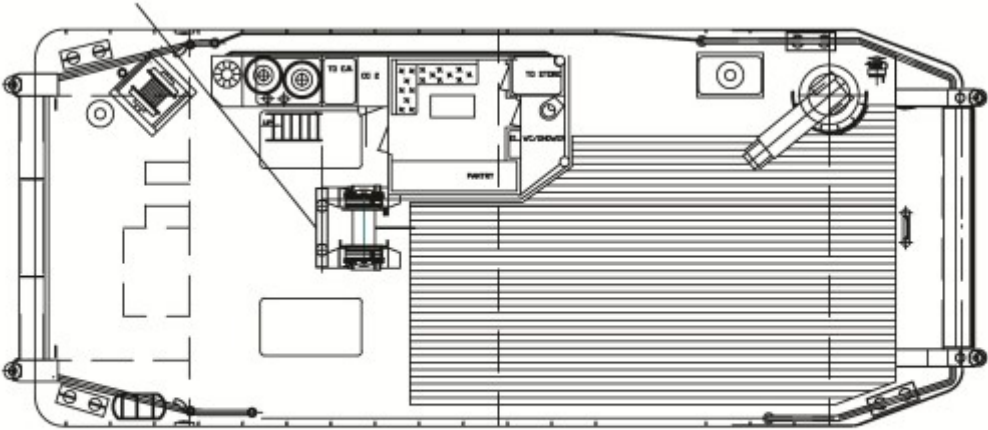
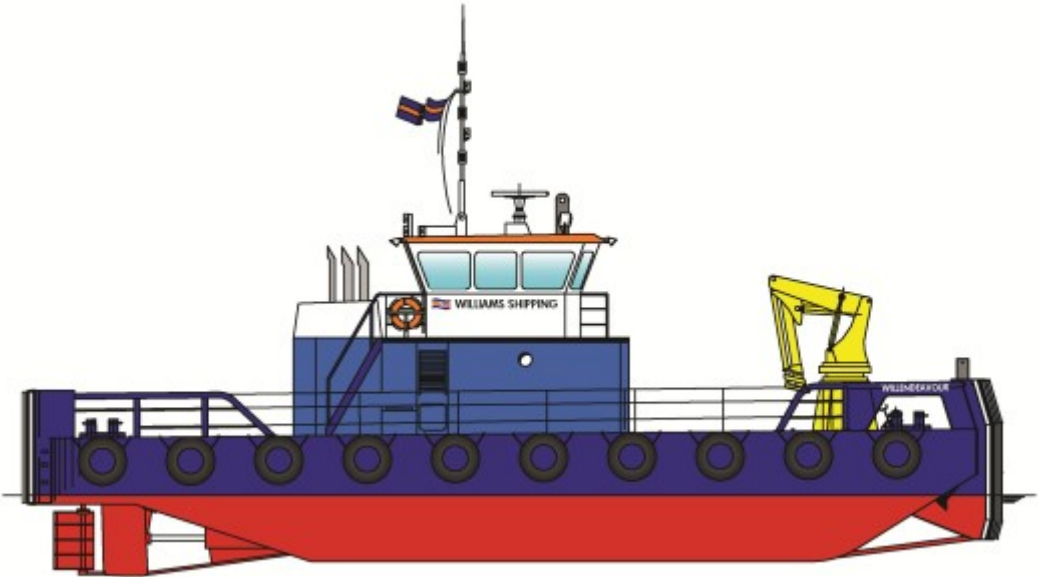
	1 No Betamarine 15KVA generator
	1 No FP Series pumpjet, 45m ³ /hr at a head of 3.5 Bar

NAVAIDS

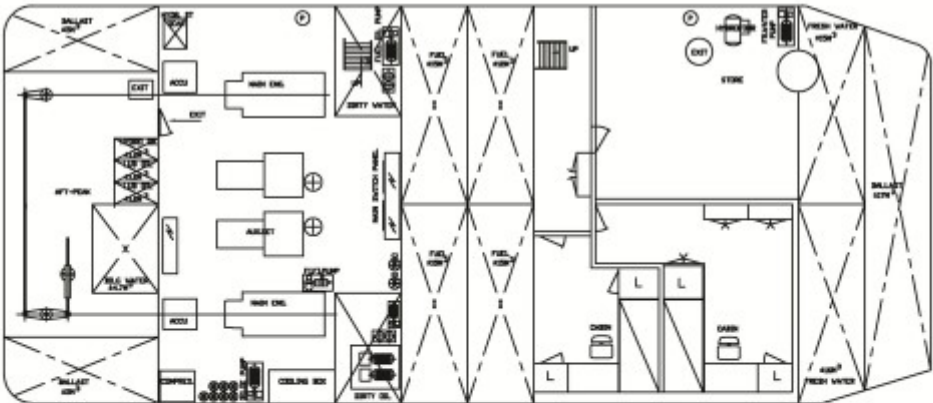
4KW Radar/Plotter
GPS with radar interface
Compass
Echo sounder
VHF radio with DSC
VHF radio (backup)
Handheld VHF (2 No)

MULTICAT TYPE WORKBOAT

WILLENDÉAVOUR



BELOW MAINDECK



BELOW MAINDECK





GENERAL

Type of Vessel:	Eurocarrier 2209
Builder:	Neptune Marine BV
Build Date, Place:	2007, The Netherlands
Classification:	Bureau Veritas I 3/3 Special Service/Multi
Certification:	MCA Workboat Code Cat 2 (60 miles) 12 pax

DIMENSIONS

Length O.A.:	22m
Beam O.A.:	9m
Depth at Sides:	3m
Draft Aft:	1.8m

PERFORMANCE

Free Running Speed:	9 knots (approx)
Bollard Pull:	15.0t (approx)
Deck Carrying Capacity:	80t

PROPULSION SYSTEM

Main Engines:	2 x Caterpillar C18
Total Power:	1200hp/894Kw@ 1800 rpm
Marine Transmissions:	2 x Twin Disc MG516 DC 4.52:1
Propulsion:	2 x 1350mm dia 4-blade fixed pitch propellers in Nozzles

AUXILIARY EQUIPMENT

Generator Sets:	John Deere 4045TF258 (keel cooled) - 68Kw John Deere 4045TF258 (radiator cooled) - 75Kw
Fuel Transfer Pumps:	40m³ per hr
Water Transfer Pumps:	40m³ per hr
Electrical System:	24V DC and 220/415V connections

DECK EQUIPMENT

Hydraulic Crane:	Heila 120-4SL - 120t/m (with 5t winch and r/c)
Capacity:	[9.3t @ 12.11,] inc remote control
Anchor /Tow Winch:	Hydrauvision 50 tonnes
Tugger Winch:	Hydrauvision 10 tonnes
Bow Roller / Stern Roller:	820mm dia
Towing Hook:	15t SWL
Air Compressor:	14 cuft/min
Welding Set:	Rowac GL400
Burning Gear:	Oxy Acetylene
Other:	Wooden deck protection, 2 push knees

TANK CAPACITIES

Fuel Oil:	57.00m³
Fresh Water:	42.00m³
Lube Oil:	0.6m³

ACCOMMODATION

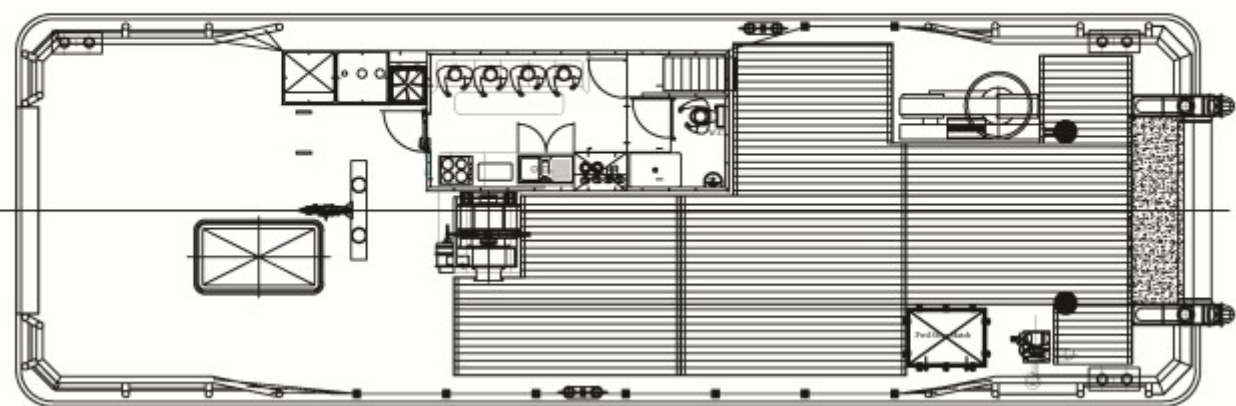
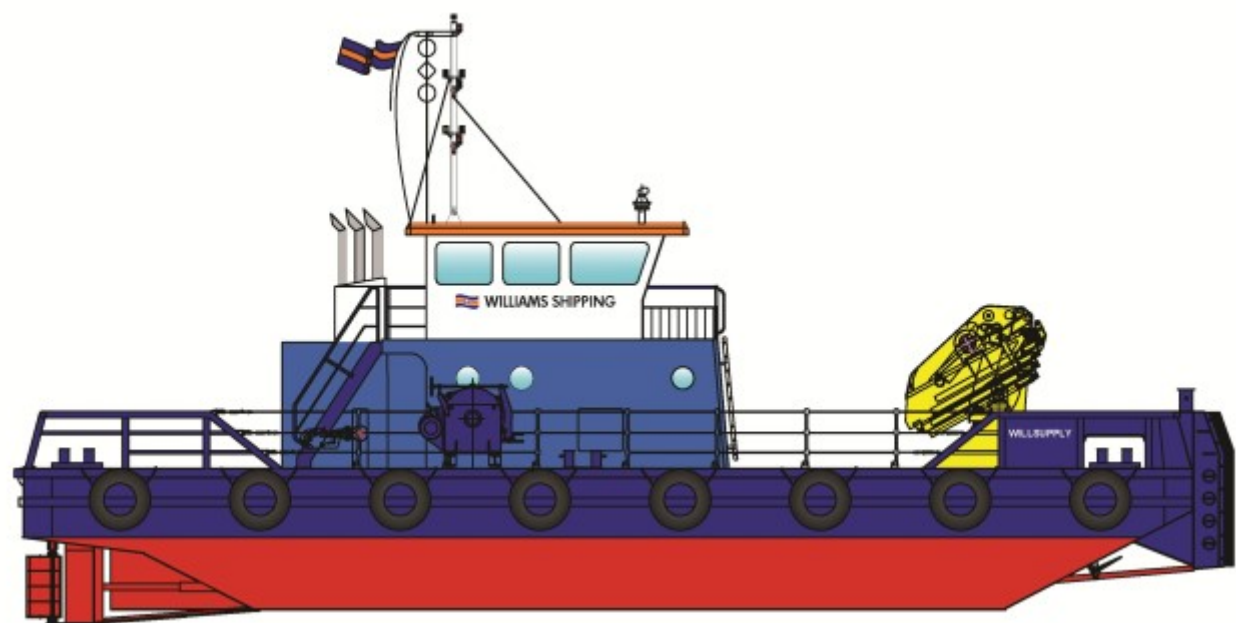
Wheelhouse with air conditioning seating for crew, large air conditioned galley / day room with sanitary space.
Below deck 2 x 1 person cabins, 1 x 2 person cabin. Large workshop/store, washing machine and dryer.

NAVIGATION & COMMUNICATION EQUIPMENT

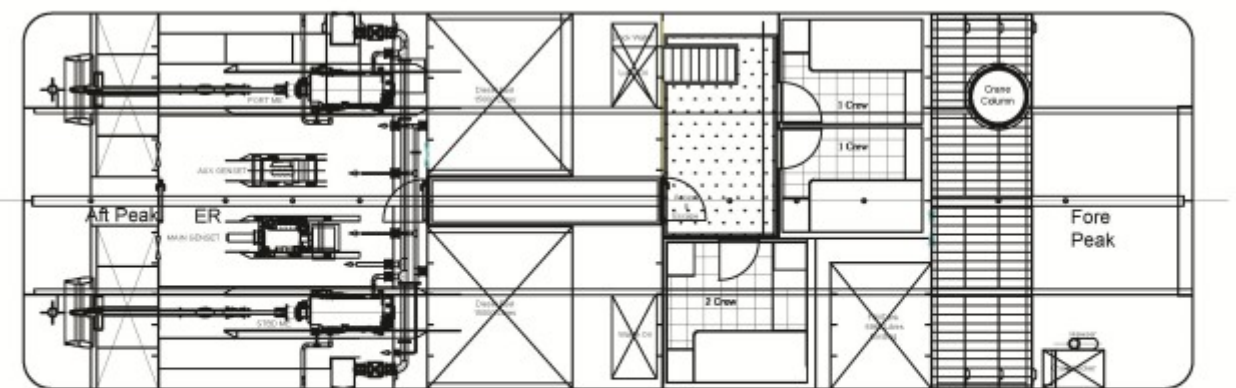
Searchlight:	Sunbeam Searchlight 250W
Compass:	Kotter type / Furuno SC-50 Satellite Compass
Radar:	Furuno 1513
GPS:	Furuno GP-150D
Echo Sounder:	Furuno FCV-585
VHF Radio:	2 x Sailor RT 5022DSC
Handheld VHF:	2 x Tron TR20
Navtex:	Dual Channel NX700A
Chart Plotter:	PC with Euronav electronic charts
AIS:	Furuno FA170
Satellite Phone:	Sailor Iridium SC4000
Phone:	Motorolla GSM phone
Auto Pilot:	Radio Holland Seapilot 25
SART:	Tron Sart 9ghz
EPIRB:	Tron 40s 406mhz

MULTICAT TYPE WORKBOAT

WILLSUPPLY



P Main Deck



Below Deck





GENERAL

Type of Vessel:	Multicat type vessel
Builder:	Manor Marine
Build Date, Place:	2011, UK
Certification:	MCA Workboat Code Cat 2 (60 miles) 12 pax

DIMENSIONS

Length O.A.:	20m
Beam O.A.:	7m
Moulded Depth at Sides:	2.5m
Draft Aft:	1.8m

PERFORMANCE

Free Running Speed:	9 knots (approx)
Bollard Pull:	9t (approx)
Deck Carrying Capacity:	20t

PROPULSION SYSTEM

Main Engines:	2x Doosan Daewoo L126TI
Total Power:	720HP/530Kw @ 2000rpm
Marine Transmissions:	Dong-I DMT 150H - 3.43:1
Propulsion:	2x 4-blade fixed pitch props in 1050mm Nozzles

AUXILIARY EQUIPMENT

Generator Sets:	Sabre Perkins 4.4 TWGM – 86Kva
Harbour Generator Set:	Beta Marine Kubota radiator cooled - 21Kva
Fuel Transfer Pumps:	120lpm
Electrical System:	24V DC / and 220/415V connections

DECK EQUIPMENT

Hydraulic Crane:	BS680M5—68tm (with 4.5t winch)
Capacity:	3.6t@14.15 m / 12.2t@4.73
Anchor Handling	North Sea Winches -17t pull, 40t brake, warp head
Winch:	

Tugger Winch:	North Sea Winches - 5t pull
Bow Roller:	450mm diameter
Towing Hook:	Mampaey Towing hook (15t SWL)
Welding Set:	PK300— 3 phase arc set (portable)
Burning Gear:	Oxy/Acetylene
Deck Protection:	Timber

TANK CAPACITIES

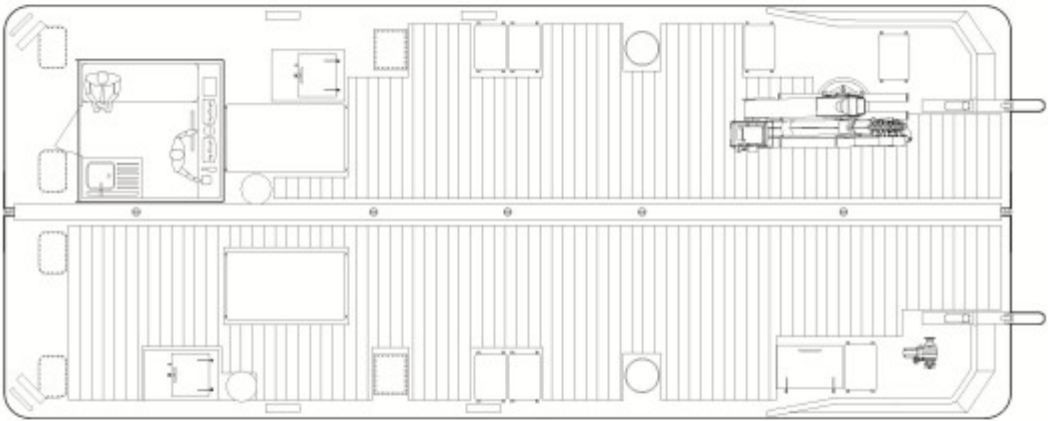
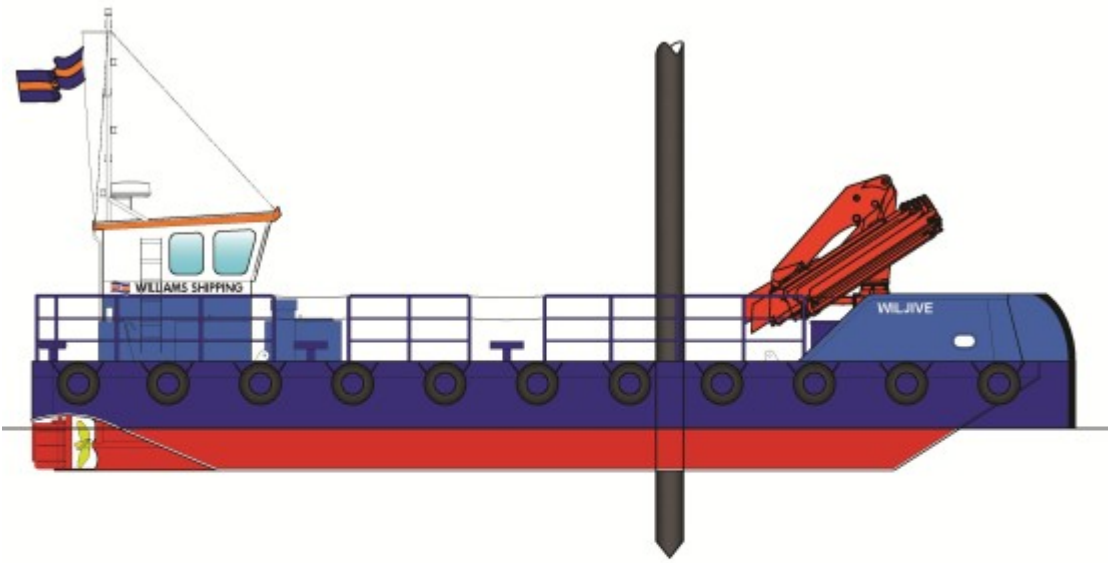
Fuel Oil:	30m³ with transfer pump
Fresh Water:	5m³
Lube Oil:	668ltrs
Ballast Tanks:	2x 5115ltr

ACCOMMODATION

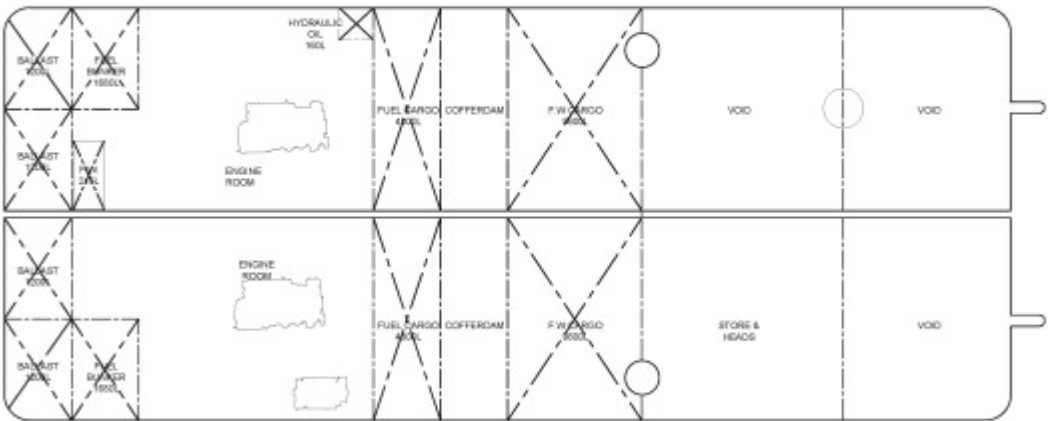
Wheelhouse with seating area, large galley / day room.
2 x single cabins , 1 x twin cabin, sanitary space, workshop

NAVIGATION & COMMUNICATION EQUIPMENT

Searchlight:	Seematz WS351 500W
Compass:	Lilley & Gillie Kotter Type/Furuno SC-50 Sat Compass
Radar:	Furuno FR8062
GPS / DGPS:	Furuno GP33 / Furuno GP-150
Echo Sounder:	Furuno LS6100
VHF Radio (DSC):	2 x Icom IC-M505
Handheld VHF:	2 x Icom IC-M35
Chart Plotter:	Microplot 7
AIS:	Comar Class A AIS
Satellite Phone:	Sailor Iridium SC4000
Auto Pilot:	Furuno Navpilot 700
Phone:	Motorolla GSM
Loud Hailer:	Furuno LH-3000
EPIRB:	McMurdo Smart Find



Main Deck



Below Deck





GENERAL

Type of Vessel:	Meercat RT15
Builder:	Meercat Workboats Ltd
Build Date, Place:	2011, UK
Certification:	MCA Workboat Code Cat 3 (20 miles) 2 crew, 4 pax

DIMENSIONS

Length O.A.:	15.5m
Beam O.A.:	6.0m
Depth at Sides:	1.625m
Draft Aft:	0.8m
Working Air Draft:	3.5m

PERFORMANCE

Free Running Speed:	8 knots (approx)
Bollard Pull:	3t (approx)
Deck Carrying Capacity:	26t

PROPULSION SYSTEM

Main Engines:	2x Doosan Daewoo L136
Total Power:	320HP/235Kw @ 2200rpm
Marine transmissions:	Dongl DMT 90A-H 2.45:1
Propulsion:	2x 700mm 5-blade fixed pitch props

AUXILIARY EQUIPMENT

Generator Sets:	BETA – 9Kva
Fuel Transfer Pumps:	100lpm
Electrical System:	24V DC / 220V shore connection

DECK EQUIPMENT

Hydraulic Crane:	Palfinger PK23500(M)C— 23t.m (with pedestal)
Capacity:	4.8t @4.2m / 1.6t@12.1m
Anchor Windlass:	Electric
Tow Post	
Wooden Deck Protection	
Removable Bow Boards	
Deck Winch:	North Sea Winches 7t (100m @ 20mm)
Bowroller	

OPTIONAL EQUIPMENT

Spud Legs (x2):	10.5m long x 439mm diameter
Burning / cutting gear:	Optional
Compressors:	Optional
Containers and cabins:	Optional (6ft to 20ft)

TANK CAPACITIES

Fuel Bunkers:	2x 1500ltr
Fuel Cargo:	2x 4800ltr

ACCOMMODATION

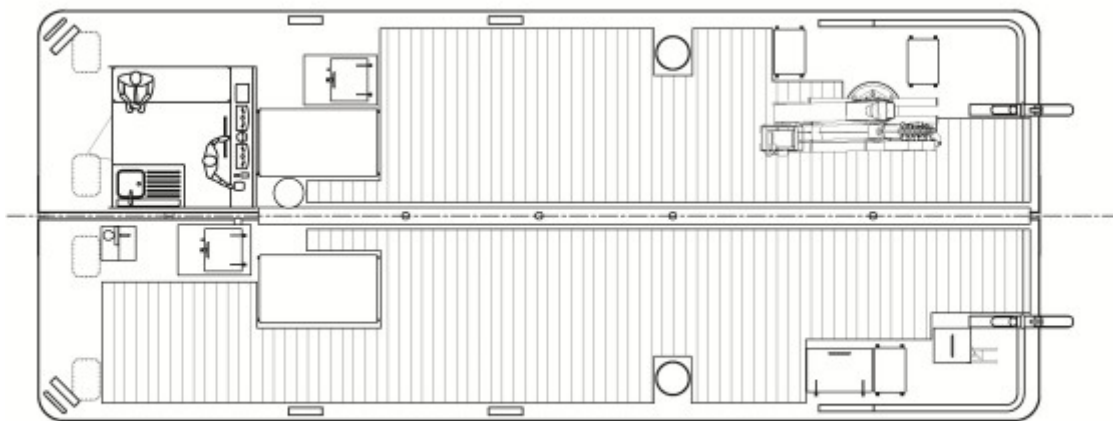
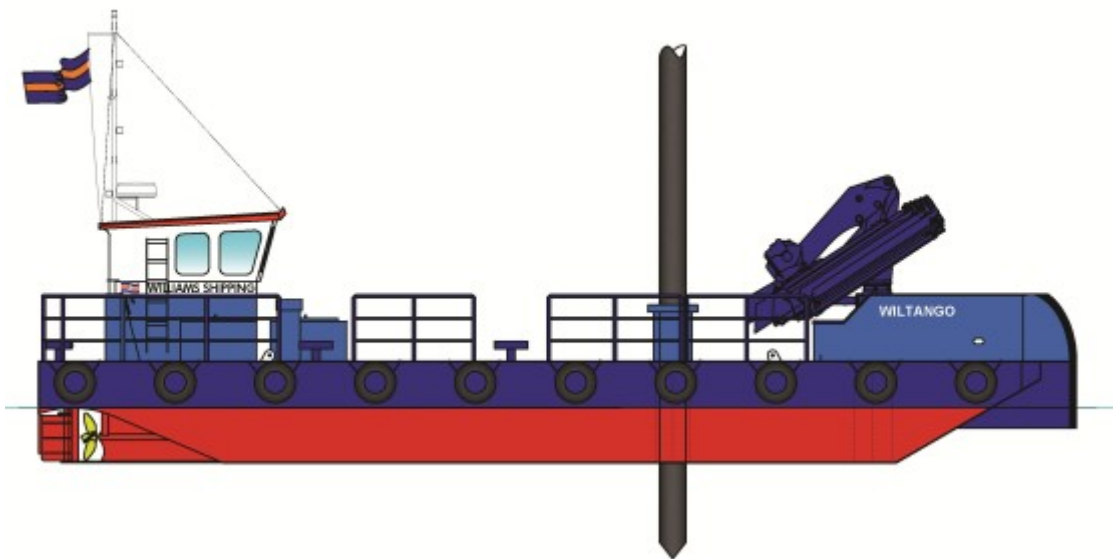
Wheelhouse with bench seat and galley unit including sink and hot water supply. Sanitary space below deck.

NAVIGATION & COMMUNICATION EQUIPMENT

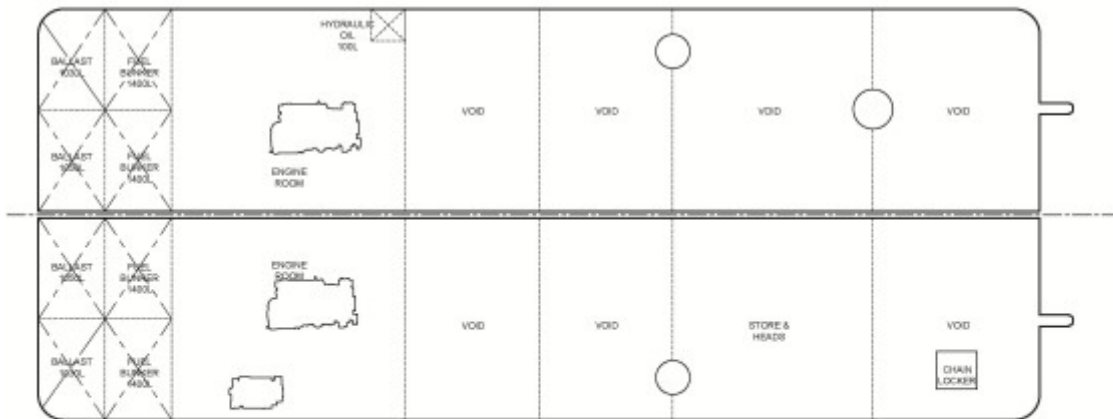
Searchlight:	ITT Jabsco
Compass:	PLastimo Olympic
Radar/Chart Plotter:	Furuno MFD 9.4 (4Kw)
GPS:	Furuno GP320B (sensor)
Echo Sounder:	Raymarine ST40
VHF Radio:	Icom IC-M505
Handheld VHF:	Icom IC-M1 Euro
Phone:	Motorolla GSM
AIS:	Comar Class B

ROAD SPECIFICATION

Length x Breadth:	2 hulls @ 15.5m x 3m
Air Draft:	Port Hull: 4.095m / S'board Hull 2.89m
Transport Weight:	Port Hull: 25t / S'board Hull 5t



Main Deck



Below Deck





GENERAL

Type of Vessel:	Meercat RT15
Builder:	Meercat Workboats Ltd, UK
Build Date, Place:	2009, UK
Certification:	MCA Workboat Code Cat 3 (20 miles) 2 crew, 8 pax

DIMENSIONS

Length O.A.:	15.5m
Beam O.A.:	6.0m
Depth at Sides:	1.5m
Draft Aft:	0.8m
Working Air Draft:	3.4m

PERFORMANCE

Free Running Speed:	8 knots (approx)
Bollard Pull:	3t (approx)
Deck Carrying Capacity:	25t

PROPULSION SYSTEM

Main Engines:	2x Doosan Daewoo L136 (keel cooled)
Total Power:	320HP/235Kw @ 2200rpm
Marine transmissions:	Dongl DMT 90A-H 2.45:1
Propulsion:	2x 700mm 5-blade fixed pitch props

AUXILIARY EQUIPMENT

Generator Sets:	Beta Marine – 9Kva (keel cooled)
Fuel Transfer Pumps:	52lpm
Electrical System:	24V DC / 220V shore connection

DECK EQUIPMENT

Hydraulic Crane:	Palfinger PK23500(M)C— 23t.m (with pedestal)
Capacity:	4.8t@4.2m / 1.6t@12.1m
Anchor Windlass:	Electric
Tow Post	
Wooden Deck Protection	
Removable Bow Boards	
Winch:	North Sea Winches 7t (100m @ 20mm)

OPTIONAL EQUIPMENT

Spud Legs (x2):	10.5m long x 439mm diameter
Burning / Cutting Gear:	Optional
Compressors:	Optional
Containers and Cabins:	Optional (6ft to 20ft)

TANK CAPACITIES

Fuel Bunkers:	4000ltr
---------------	---------

ACCOMMODATION

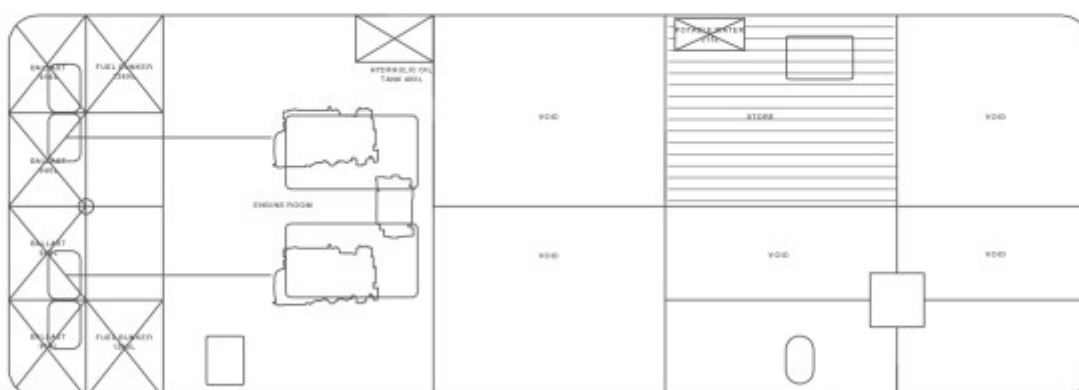
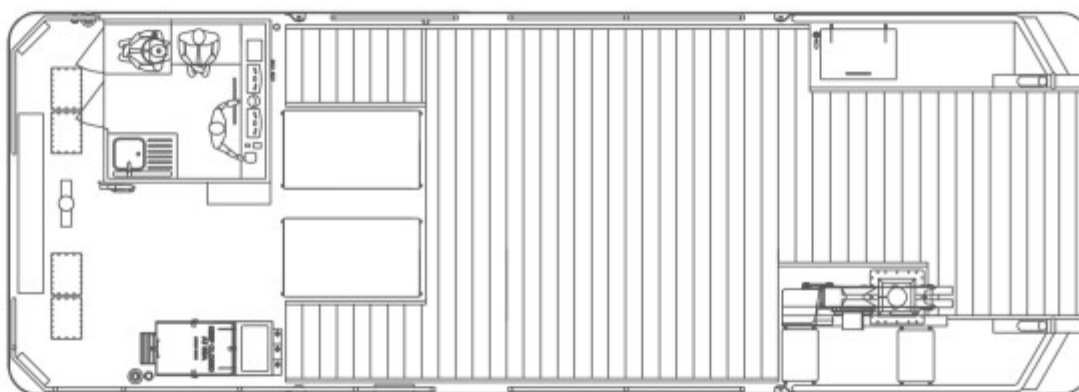
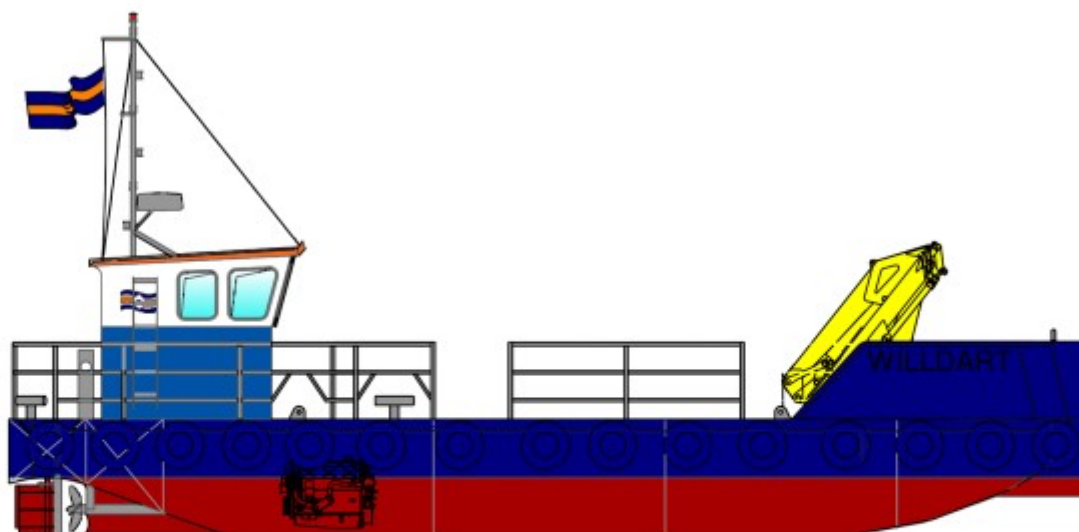
Wheelhouse with bench seat and galley unit including sink and hot water supply. Sanitary space below deck.

NAVIGATION & COMMUNICATION EQUIPMENT

Searchlight:	ITT Jabsco
Compass:	Plastimo Olympic
Radar/Plotter:	Furuno GD1920C
GPS:	Furuno GP30
Echo Sounder:	Raymarine ST40
VHF Radio:	Icom IC-M411
Handheld VHF:	Icom IC-M71
Phone:	Motorolla GSM
AIS:	Comar Class B

ROAD SPECIFICATION

Length x Breadth:	2 hulls @ 15.5m x 3m
Air Draft:	Port Hull: 3.97m / S'board Hull 2.89m
Transport Weight:	Port Hull: 25t / S'board Hull 23t



Scale

0 1 2 3 4 5 6 7 8 9 10m



GENERAL

Type of Vessel:	Meercat RT14
Builder:	Meercat Workboats Ltd
Build Date, Place:	2017, UK
Certification:	MCA Workboat Code Cat 3 (20 miles)
	2 crew, 4 pax

DIMENSIONS

Length O.A.:	14.5m
Beam O.A.:	4.85m
Depth at Sides: Draft	1.5m
Aft:	0.8m
Working Air Draft:	3m

PERFORMANCE

Free Running Speed:	8.5 knots (approx)
Bollard Pull: Deck	3t (approx.)
Carrying Capacity:	14t

PROPULSION SYSTEM

Main Engines:	2x Doosan Daewoo L136
Total Power:	320HP/235Kw @ 2200rpm
Marine Transmissions:	Newage PRM 1000 2.86:1
Propulsion:	2x 700mm 5-blade pitch props

AUXILIARY EQUIPMENT

Generator Sets:	BETA—21kVA
Electrical system:	115V / 220V & 415V connections

DECK EQUIPMENT

Hydraulic Crane:	Bonfiglioli P15000L 4SI 15 t/m with r/c
Capacity:	3.2t@4m / 0.89t@11.6m
Tow Post	
Wooden Deck Protection	
Removable Bow Boards	

OPTIONAL EQUIPMENT

Burning / Cutting Gear	
Compressors	Optional
Containers and Cabins	6ft to 20ft

TANK CAPACITIES

Fuel Bunkers:	2x1200ltr
Black Water:	80ltr
Potable Water:	215ltr
Hydraulic Oil:	400ltr
Ballast Water::	4x900ltr

ACCOMMODATION

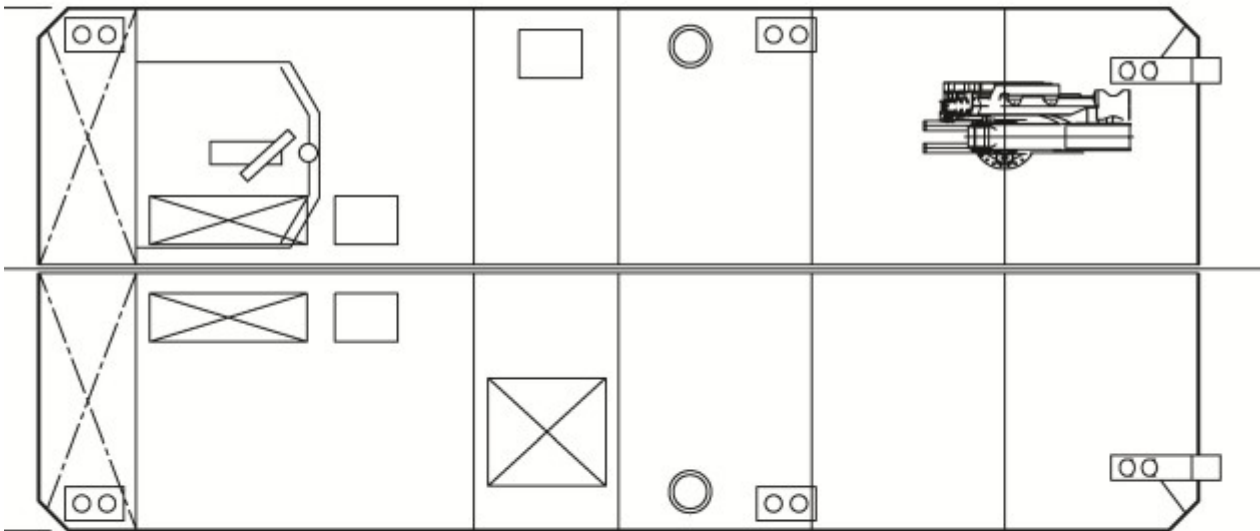
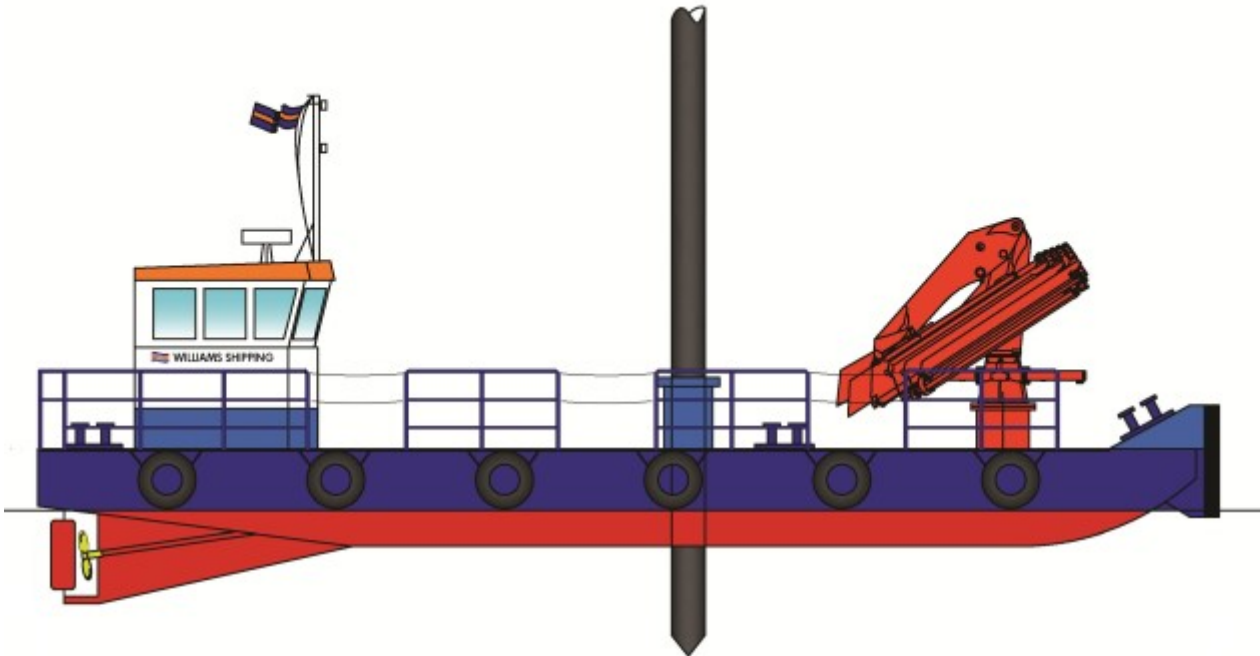
Wheelhouse with bench seat and galley unit including sink and hot water supply. Sanitary space above deck

NAVIGATION & COMMUNICATION EQUIPMENT

Searchlight:	ITT Jabsco
Compass:	Plastimo Olympic + 135
Radar/Chart Plotter:	Raymarine Quantum Radome
Chart Plotter:	Raymarine eS97
GPS:	Raymarine RS 1500
Echo Sounder:	Raymarine I40
VHF Radio:	Icom IC-M423G
Handheld VHF:	Icom IC-M930
ALS:	Raymarine ALS650

ROAD SPECIFICATION

Length x Breadth:	1 hull @ 14.5m x 4.85m
Transport Weight:	38t





GENERAL

Type of Vessel:	Road Transportable Multicat type vessel
Builder:	Bailey & Boynton, UK
Build Date, Place:	1986, UK
Certification:	MCA Workboat Code Cat 3 (20 miles) 2 crew, 4 pax

DIMENSIONS

Length O.A.:	14m
Beam O.A.:	6.4m
Depth at Sides:	1.3m
Draft Aft:	1.1m
Working Air Draft:	3.4m

PERFORMANCE

Free Running Speed:	8 knots (approx)
Bollard Pull:	2t (approx)
Deck Carrying Capacity:	25t

PROPULSION SYSTEM

Main Engines:	2x Sabre Perkins M130C
Total Power:	260HP/192Kw @ 2600rpm
Marine Transmissions:	PRM 500
Propulsion:	2x 762mm 4blade fixed pitch props

AUXILIARY EQUIPMENT

240v Power:	Invertor
Fuel Transfer Pumps:	52lpm 3m head (max 10m head)
Electrical System:	12V DC

DECK EQUIPMENT

Hydraulic Crane:	Palfinger PK23080 — 23t.m (with seat)
Capacity:	4.8t@4.2m / 1.6t@12.1m
Tow Post	
Wooden Deck Protection	
Removable Bow Boards	

OPTIONAL EQUIPMENT

Spud Legs (x2):	10.5m long x 439mm diameter
Winch:	North Sea Winches 7t (100m @ 20mm)
Burning / Cutting Gear:	Optional
Compressors:	Optional
Containers and Cabins:	Optional (6ft to 20ft)

TANK CAPACITIES

Fuel Bunkers:	2 x 600ltr
Fuel Cargo:	1 x 1800ltr

ACCOMMODATION

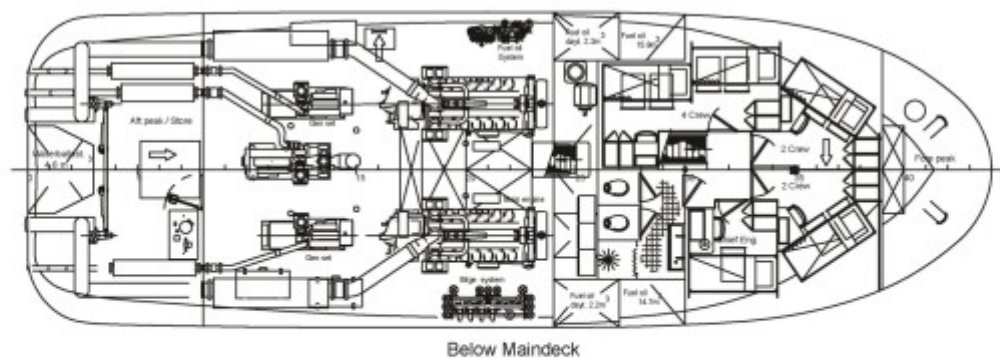
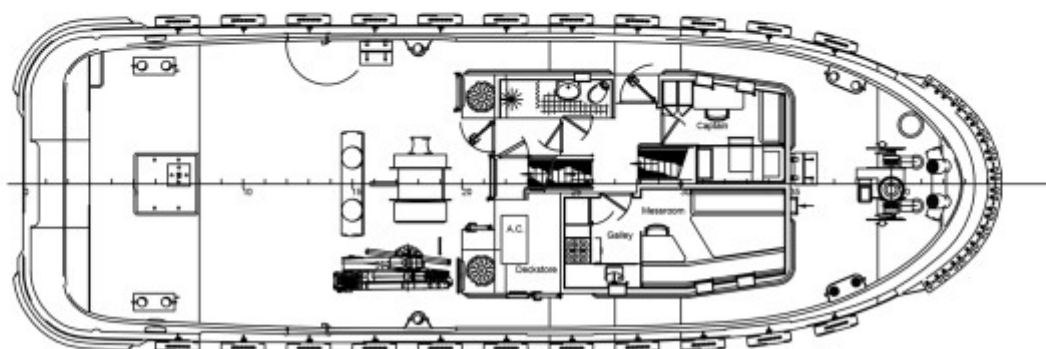
Wheelhouse with bench seat.

NAVIGATION & COMMUNICATION EQUIPMENT

Searchlight:	Francis
Compass:	Sestrel
Radar:	Furuno M1623
GPS:	Furuno GP30
Echo Sounder:	Vetus
VHF Radio:	Icom IC-M411 DSC
Handheld VHF:	Icom IC-M71
AIS:	AMEC Camino-101 Class B Transponder

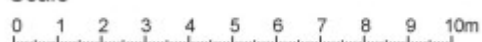
ROAD SPECIFICATION

Length x Breadth:	2 hulls @ 14m x 3m)
Air Draft:	Port Hull: 3.8m / S'board Hull 2.7m
Transport Weight:	Port Hull: 24t / S'board Hull 4t



Below Maindeck

Scale





GENERAL

Type of Vessel:	Stantug 2207
Builder:	Damen Shipyards
Build Date, Place:	2000, The Netherlands
Classification:	Bureau Veritas I 3/3 Hull & Match Tug Coastal Waters
Certification:	MCA Workboat Code Cat 2 (60 miles) 12 pax

DIMENSIONS

Length O.A.:	22.5m
Beam O.A.:	7.25m
Moulded Depth at	
Sides:	3.75m
Draft Aft:	2.95m

PERFORMANCE

Free Running Speed:	12 knots
Bollard Pull:	28.4t approx

PROPULSION SYSTEM

Main Engines:	2x Caterpillar 3508B DI-TA/B (keel cooled)
Total Power:	2000hp (1492Kw)@ 1600 rpm
Marine Transmissions:	2x Reintjes WAF561 5.95:1
Propulsion:	2x 1900 Kaplan II Promarin in nozzles

AUXILIARY EQUIPMENT

Generator Sets:	2x Caterpillar 3304 NA/SR 4—63Kva each (keel cooled)
Electrical System:	24V DC / and 220/415V connections

TANK CAPACITIES

Fuel Oil:	34.9m³
Fresh Water:	9.2m³
Ballast Water:	4.5m³

DECK EQUIPMENT

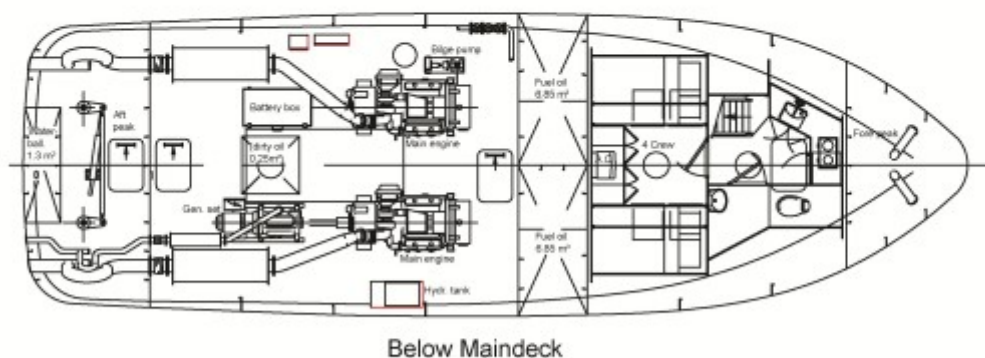
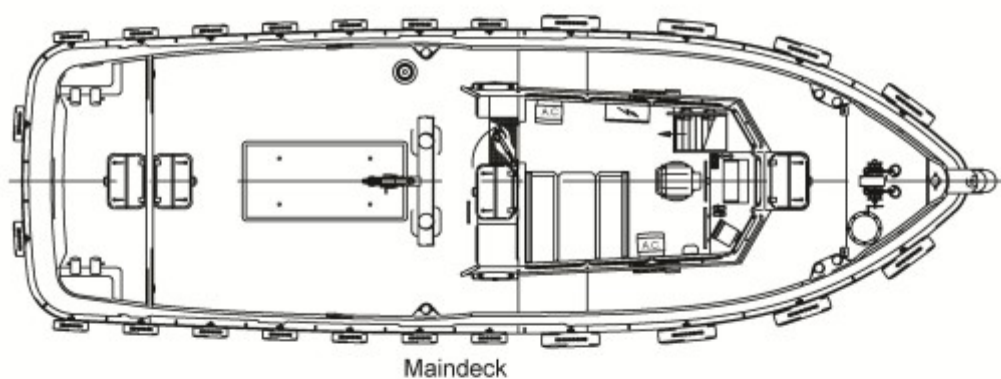
Towing Winch:	Kraaijevald 10t pull/50t hold (3rd layer) 450 @36mm drum end
Towing Hook:	Mampaey - 45t SWL
Deck Crane:	HLM 170—4S. Capacity: 17t/m—900kg @ 12.99m
Air Compressor:	14cuft/min
Welding Set:	Portable
Burning Equipment:	Oxy Acetylene

ACCOMMODATION

Fully air-conditioned living spaces for 10 persons consisting of a captain's cabin, officers cabin, 1x crew cabin for 4 persons, 2x crew cabins for 2 persons. a galley/mess and sanitary facilities.

NAVIGATION & COMMUNICATION EQUIPMENT

Searchlight:	Seematz WS351 500W
Compass:	Kotter Type
Satellite Compass:	Furuno SC-50
Radar:	Furuno FAR-21 x7—BB
GPS:	Furuno GP50
Echo Sounder:	Furuno FCV-611
VHF Radio:	1xSailor RT2048 1xFuruno FM8900 Class A DSC
MF/HF Radio:	Furuno FS-1562 (50w)
Handheld VHF:	Furuno & Jotron
Navtex:	Furuno NX500
Chart Plotter:	PC with Euronav electronic charts
AIS:	Furuno FA-150 (Class A)
Satellite Phone:	Sailor Iridium SC4000
Phone:	Motorolla GSM phone
Auto Pilot:	Simrad AP70
EPIRB:	Tron 40s 406mhz





GENERAL

Type of Vessel:	Stantug 1605
Builder:	Damen Shipyards
Build Date, Place:	2004, Romania
Classification:	Bureau Veritas I 3/3 Coastal Tug
Certification:	MCA Workboat Code Cat 2 (60 miles) 12 pax

DIMENSIONS

Length O.A.:	16.89m
Beam O.A.:	5.29m
Moulded Depth:	2.51m
Draft Aft:	2.25m

PERFORMANCE

Free Running Speed:	10 knots
Bollard Pull:	12.8t

PROPULSION SYSTEM

Main Engines:	2 x Caterpillar 3408TA (Keel cooled)
Total Power:	960hp (716Kw)@ 1800 rpm
Marine Transmissions:	2x Reintjes WAF164L 5.044:1
Propulsion:	2x 1300mm dia 3-blade fixed pitch propellers in nozzles

AUXILIARY EQUIPMENT

Generator Sets:	Lister/Stamford LPW4—11Kw (Keel cooled)
Fuel Transfer Pumps:	50lpm
Electrical System:	24V DC and 220V shore supply

DECK EQUIPMENT

Deck Capstan:	1.3t @ 9m/min
Towing Hook:	Mampaey - 15t SWL
Welding Set:	Optional
Burning Equipment:	Optional

TANK CAPACITIES

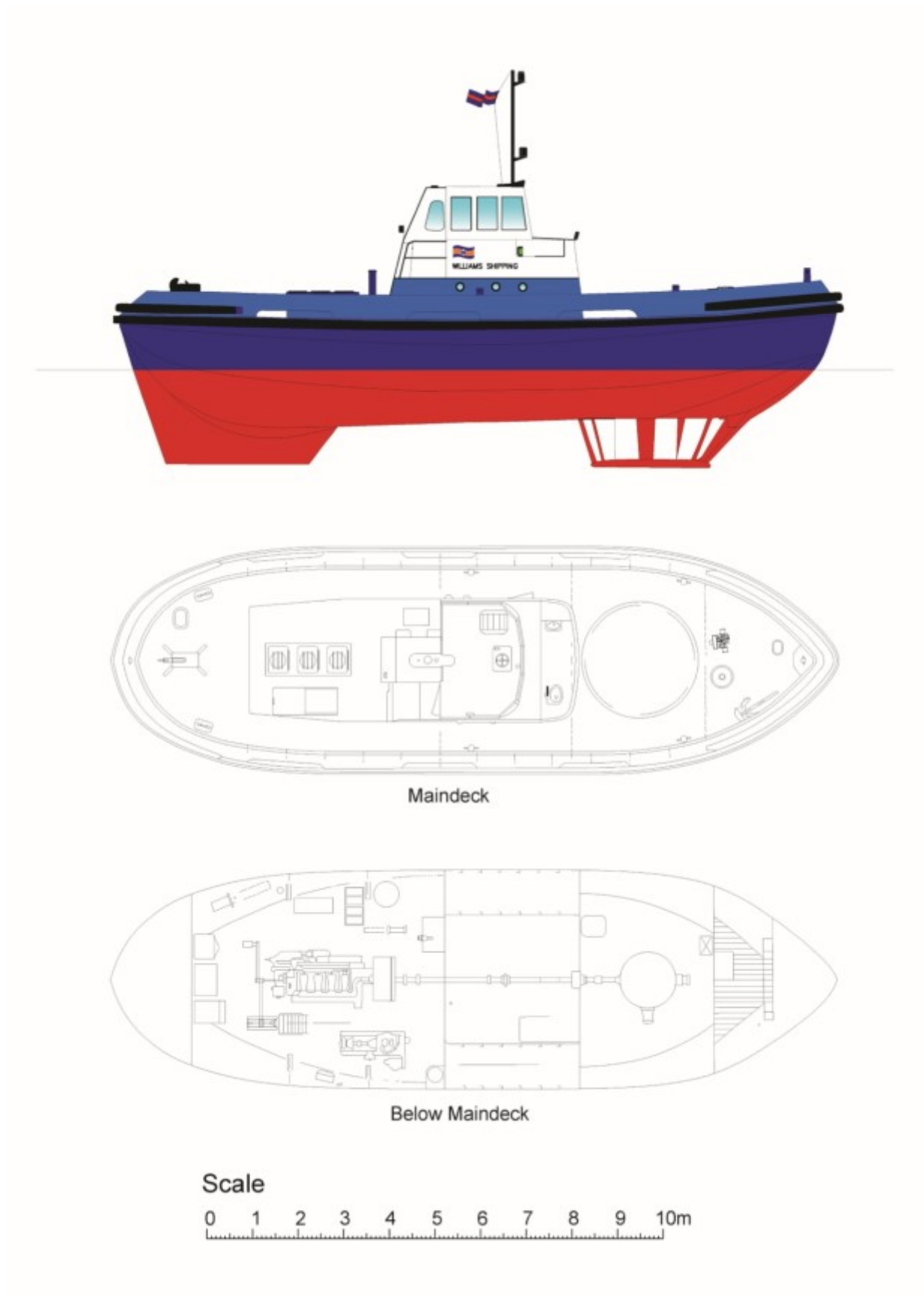
Fuel Oil:	13.7m ³
Fresh Water:	0.75m ³

ACCOMMODATION

Large Wheelhouse with air conditioning and day accommodation.
Below deck 1 x 4 person cabins, WC and shower, Galley.

NAVIGATION & COMMUNICATION EQUIPMENT

Searchlight:	Seematz Pesch 250W
Compass:	Cassen & Plath – Kotter Type
Radar:	Furuno FR1932
GPS:	Furuno GP31
Echo Sounder:	Furuno LS6100
VHF Radio:	1 x Sailor RT2048 1 x Sailor RT4822DSC
Handheld VHF:	Jotron
Navtex:	Furuno NX300
Chart Plotter:	PC with Euronav electronic charts
AIS:	SMR Transponder type
Phone:	Motorolla GSM phone
EPIRB:	Tron 40s 406mhz





GENERAL

Type of Vessel:	Triton Class Steel Voith Sneider
Builder:	Richard Dunston
Build Place:	UK 1973
Class:	MCA
Certification:	Workboat Code Category 3

DIMENSIONS

Length O.A.:	16.0m
Beam O.A.:	5.0m
Draft Aft:	2.7m
DWT:	89tons

PERFORMANCE

Free Running Speed:	8 Knots
Bollard Pull:	3t

PROPULSION SYSTEM

Main Engine:	Lister Blackstone 4 ERS
Total Power:	330HP/246Kw@750rpm
Marine Transmission / Propulsion:	Single Voith Sneider 16G/100

DECK EQUIPMENT

Towing Post
Mampaey tow hook

ELECTRICAL SYSTEM

Air Compressor: Lister SR2MA

TANK CAPACITIES

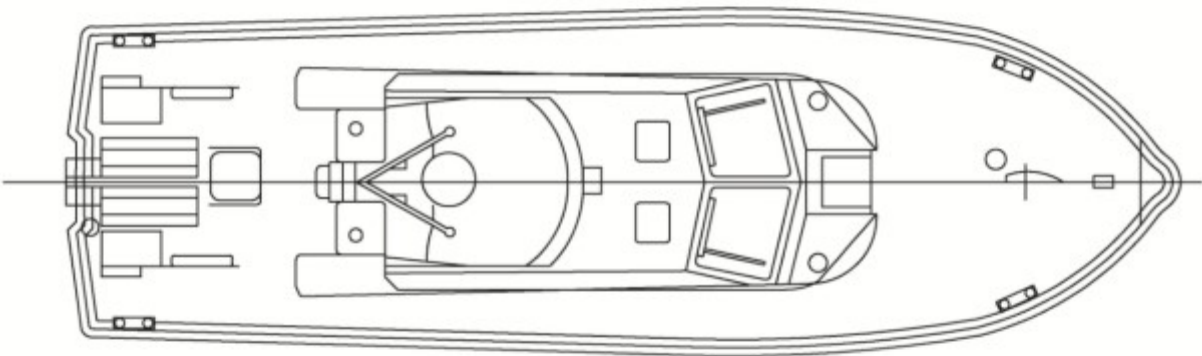
Fuel Oil: 12m³

ACCOMMODATION

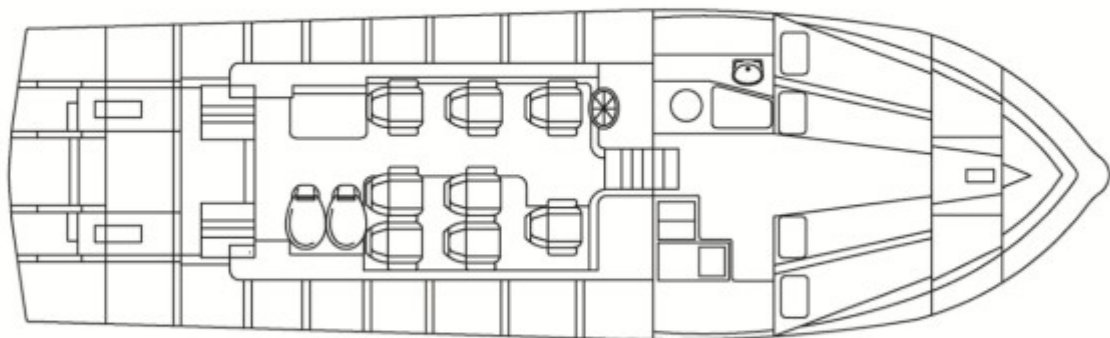
Canopy over helm position

NAVIGATION & COMMUNICATION EQUIPMENT

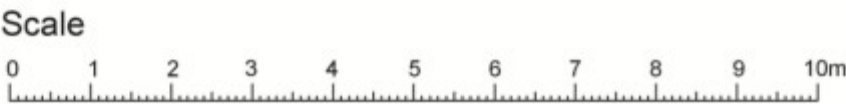
Compass:	Ritchie
Radar:	Furuno M1623
VHF Radio:	Icom IC-M401 Euro
Handheld VHF:	Icom M3 Euro



Maindeck



Below Maindeck





GENERAL

Type of Vessel:	Fast Launch / Pilot Boat
Builder:	Fairey Marinteknik / Holyhead Marine Services
Build Date, Place:	1988 Re-built 2004, UK
Classification:	MCA Workboat Code Cat 2 (60 miles) 12 pax MCA Pilot Boat - Occasional Use

DIMENSIONS

Length O.A.:	12.9m
Beam O.A.:	4.26m
Draft Aft:	1.14m

PERFORMANCE

Free Running Speed:	22 knots
---------------------	----------

PROPULSION SYSTEM

Main Engines:	2 x Scania DI9 46M
Total Power:	704hp (525Kw)@ 2200 rpm
Marine Transmissions:	2x Twin Disc MG5082A 1.06:1. BPM VD180 V-Drives
Propulsion:	2 x 5 blade fixed pitch propellers

AUXILIARY EQUIPMENT

Generator Sets:	MASE/Yanmar - 6.5Kw
Electrical System:	24V DC and 220V shore supply

DECK EQUIPMENT

Pilot Rail:	Hadrian Safety Rail
-------------	---------------------

TANK CAPACITIES

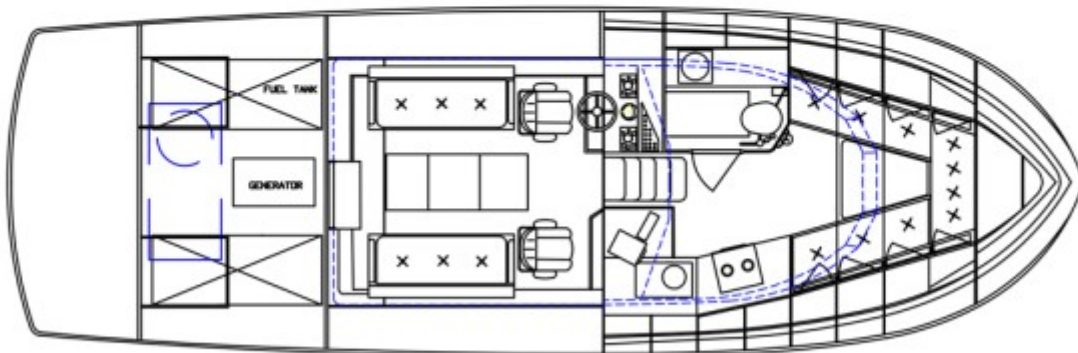
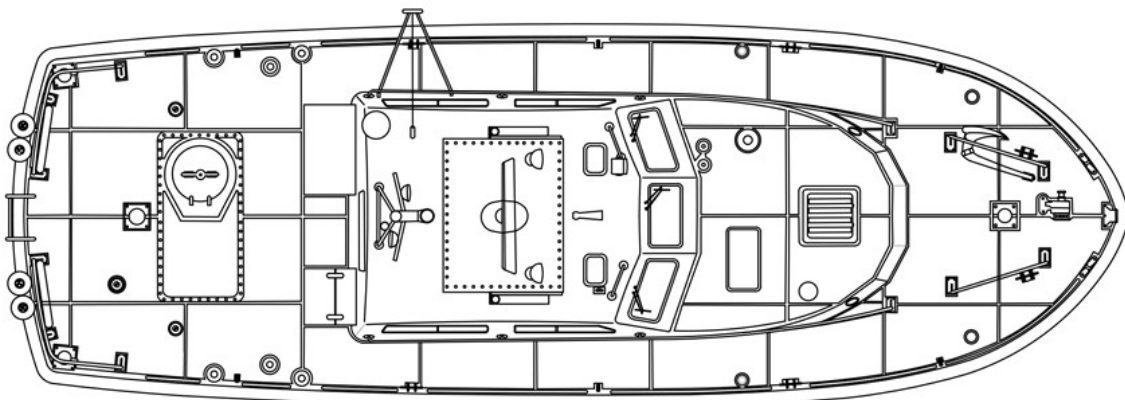
Fuel Oil:	1600 ltr
Fresh Water:	750 ltr

ACCOMMODATION

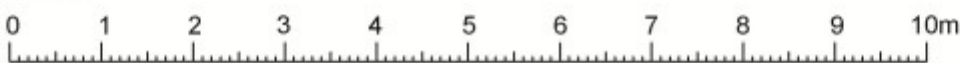
Large Wheelhouse with air conditioning and 8 marine suspension seats.
Below deck 1 x 2 berths, WC and shower, Galley.

NAVIGATION & COMMUNICATION EQUIPMENT

Searchlight:	2 x Seematz
Compass:	Sestrel Speed
Radar:	Furuno FR7062
GPS:	Furuno GP32
Echo Sounder:	Raymarine ST60
VHF Radio:	1 x Icom IC-M601VHF/DSC/ Hailer 1x Icom ICM401
Handheld VHF:	1 x Icpm M3 Euro
Navtex:	Furuno NX300
Chart Plotter:	Seiwa Explorer MK2
AIS:	Comar Class B AIS
Phone:	Motorolla GSM phone
EPIRB:	Tron 40s 406mhz



Scale





GENERAL

Type of Vessel:	Fast Launch / Pilot Boat
Builder:	Lochin Marine / 38G.D.S.V.
Build Date, Place:	1986
Classification:	MCA Workboat Code Cat 3 (20 miles) 12 passengers

DIMENSIONS

Length O.A.:	11.74m
Beam O.A.:	3.96m
Draft Aft:	1.27m

PERFORMANCE

Free Running Speed:	22 knots
---------------------	----------

PROPULSION SYSTEM

Main Engines:	2 x Yanmar 6LYA-STP
Total Power	740hp (544Kw)@ 3300 rpm
Marine Transmissions:	2 x Twin Disc MG5061A
Propulsion:	2 x 4 blade fixed pitch propellers

AUXILIARY EQUIPMENT

Generator Sets	Northern Light/Yanmar - 6.5Kw
Electrical System:	24V DC and 220V shore supply

DECK EQUIPMENT

Large open cargo deck

TANK CAPACITIES

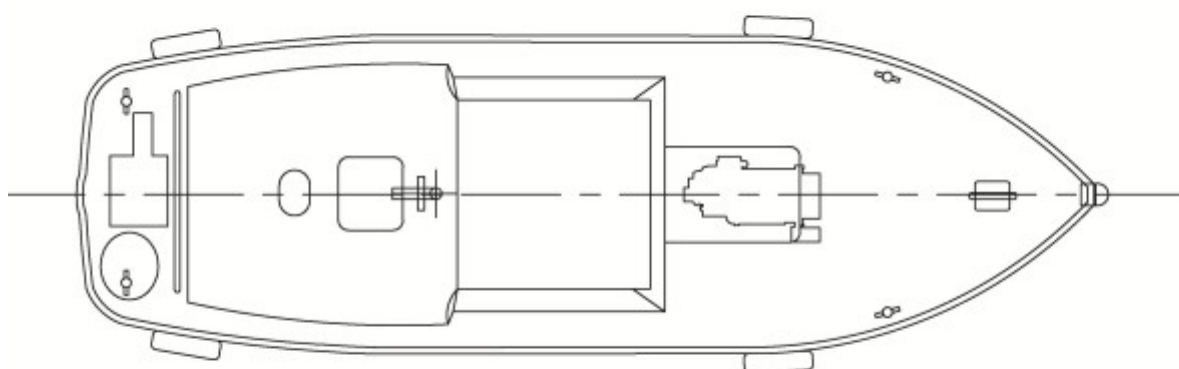
Fuel Oil	1500 ltr
Fresh Water	227 ltr

ACCOMODATION

WC, galley, forward focsle and wheelhouse seating

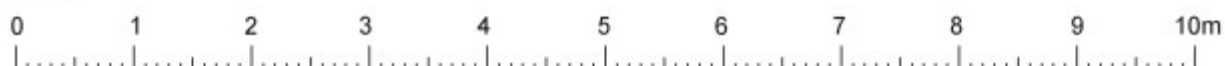
NAVIGATION AND COMMUNICATION EQUIPMENT

Searchlight	1
Compass	Sestrel Major
Radar	Furuno FR8062
GPS & Plotter	SAAB
Echo Sounder	Eagle Fish Finder
VHF Radio	1 x Sailor RT2048, 1 x Icom IC-M505DSC
Handheld VHF	1 x Icpm M3 Euro
Phone:	Motorolla GSM phone
EPIRB	Tron 40s 406mhz



Deck Layout

Scale





GENERAL

Type of Vessel:	Steel workboat / safety boat
Builder:	Mustang Marine
Build Place:	UK
Class:	MCA
Certification:	Workboat Code Category 4 (3 miles)

DIMENSIONS

Length O.A.:	9.2m
Beam O.A.:	3.0m
Draft Aft:	0.8m

PERFORMANCE

Free Running Speed:	7 Knots
Bollard Pull:	1t

PROPULSION SYSTEM

Main Engine:	Mermaid Mariner (Ford 2735)
Total Power:	135HP/82Kw @2600rpm
Marine Transmission:	PRM 502 2:1
Propulsion:	1 x 580mm single FP Propeller

DECK EQUIPMENT

Towing Post

ELECTRICAL SYSTEM

24V DC:	Single battery bank
---------	---------------------

TANK CAPACITIES

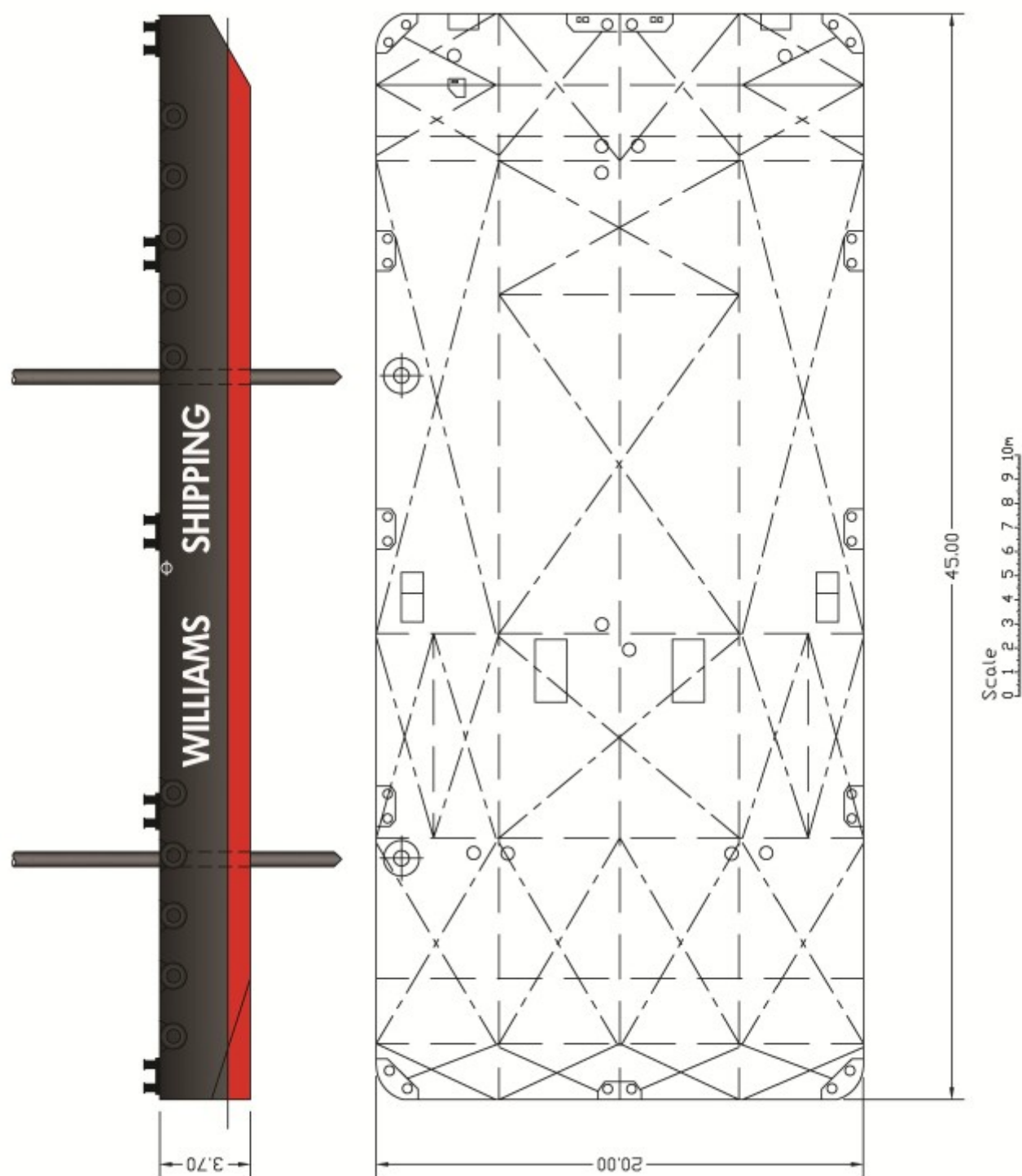
Fuel Oil:	1200ltrs
-----------	----------

ACCOMMODATION

Wheelhouse with Day Facilities

NAVIGATION & COMMUNICATION EQUIPMENT

Compass:	Ritchie
VHF Radio:	Icom IC-M401Euro
Handheld VHF:	Icom M3 Euro
AIS:	SMR Transponder





GENERAL

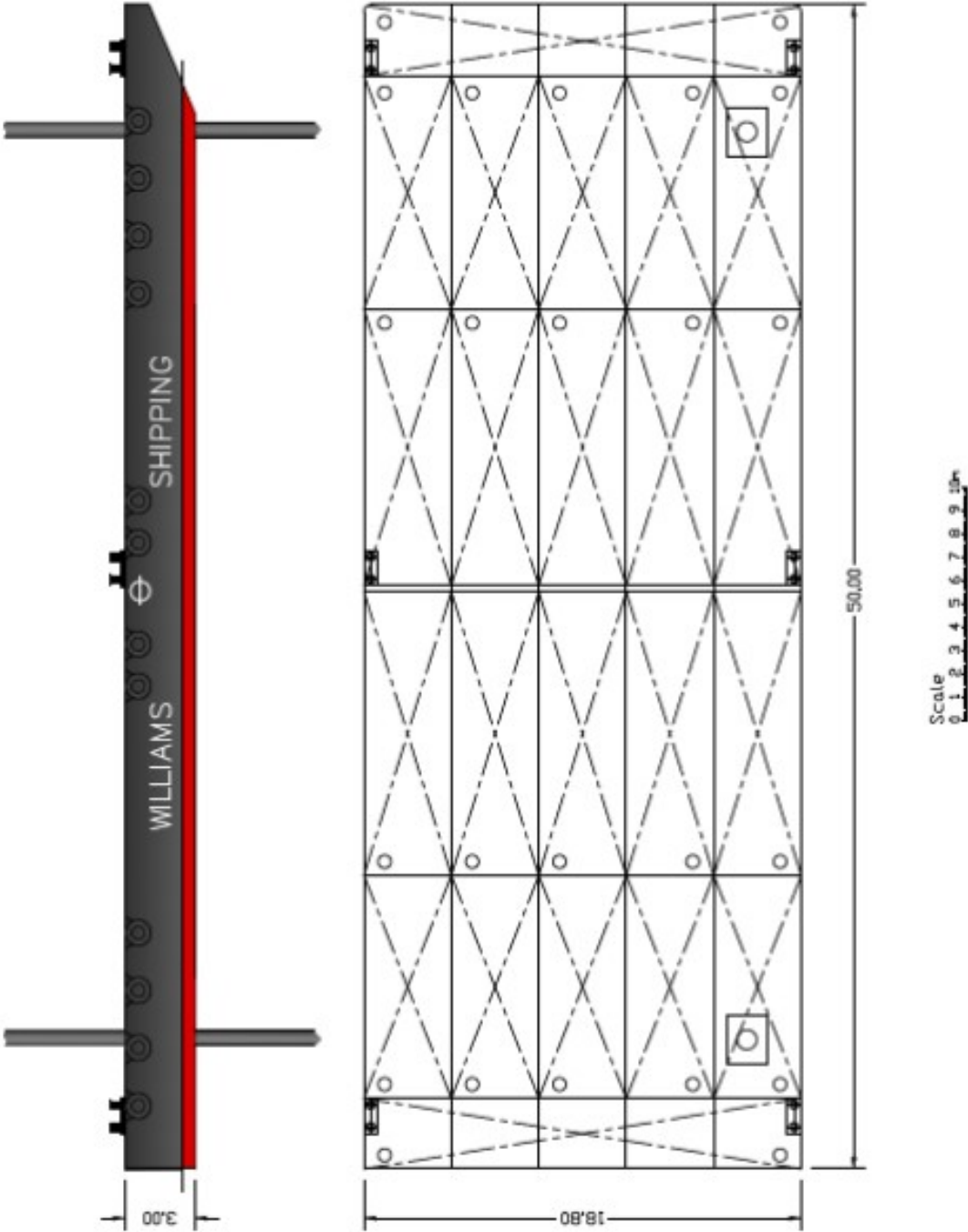
Type of Vessel:	Flat top pontoon
Builder:	Kieler Howaldswerke A.G.
Build Place:	Germany
Class:	Germanischer Lloyd 100 A5
Certification:	International Loadline

DIMENSIONS

Length O.A.:	45.0m
Beam O.A.:	20.0m
Moulded Depth:	3.6m
Light Draft:	0.94m
Loaded Draft:	2.94m
Deck Load:	2t - 10t tons/m ²
DWT:	1750t to summer load-line
Lightship Displacement:	665t

DECK EQUIPMENT

Spud Legs:	2 x 20 Ø 920mm (20mm wall thickness)
Optional Equipment:	Winches. 2-8 point mooring system Crawler cranes and knuckle-boom cranes Hydraulic spud lifters Cabins, Containers, Welfare Units Generators Fuel bowzers Lighting Counter pollution equipment Deck protection Hand railing





GENERAL

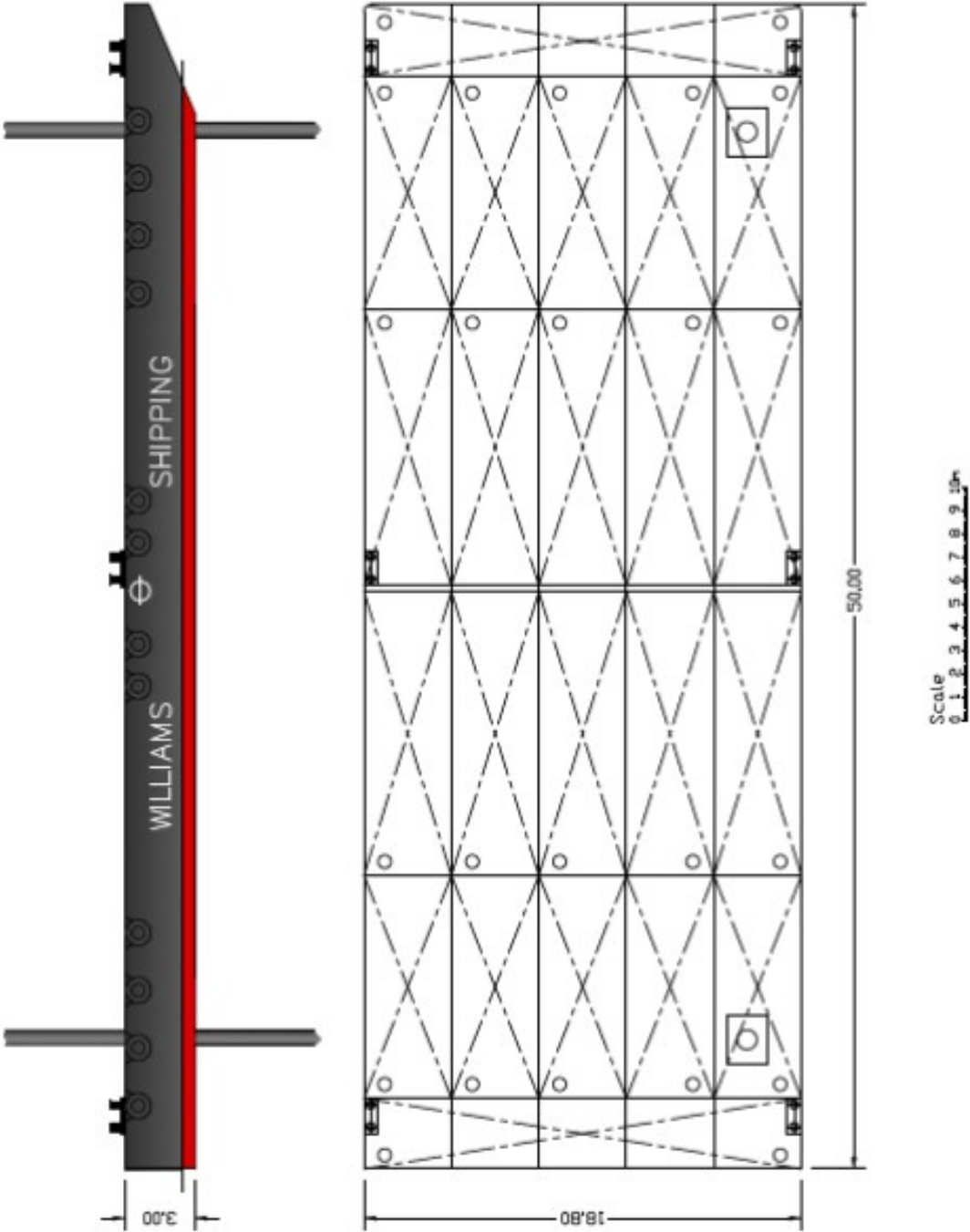
Type of Vessel:	Flat top pontoon
Builder:	Neptune Marine Projects
Build Date, Place:	2017, Poland
Class:	Bureau Veritas
Certification:	International Loadline

DIMENSIONS

Length O.A.:	50.0 m
Beam O.A.:	18.8 m
Moulded depth:	3.0 m
Light draft:	0.5 m
Loaded draft:	2.312 m
Deck load:	12t ton/m ²
DWT:	1680t to summer load-line
Lightship displacement:	431t
Max displacement:	2110t

DECK EQUIPMENT

Spud Legs:	2x 20 Ø 914mm
Optional Equipment:	Winches. 2-8 point mooring system
	Crawler cranes and knuckle-boom cranes
	Hydraulic spud lifters
	Cabins, Containers, Welfare units
	Generators
	Fuel bowsers
	Lighting
	Counter pollution equipment
	Deck protection
	Hand railing





GENERAL

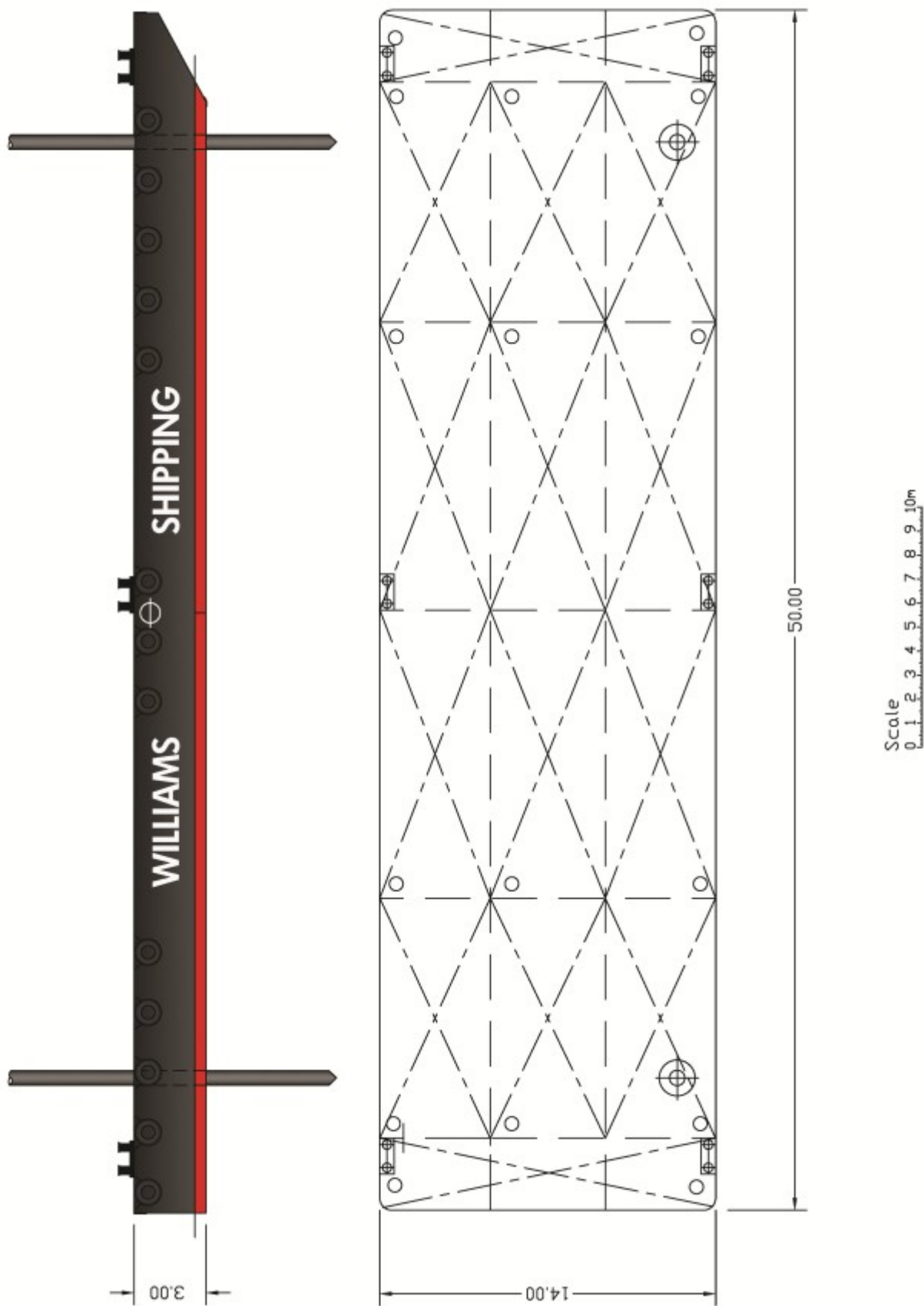
Type of Vessel:	Flat top pontoon
Builder:	Neptune Marine Services
Build Date, Place:	Holland, 2011
Class:	Bureau Veritas
Certification:	International Loadline

DIMENSIONS

Length O.A.:	50.0m
Beam O.A.:	18.8m
Moulded Depth:	3.0m
Light Draft:	0.5m
Loaded Draft:	2.312m
Deck Load:	12t ton/m ²
DWT:	1680t to summer load-line
Lightship Displacement:	431t
Max Displacement:	2110t

DECK EQUIPMENT:

Spud Legs:	2x 20 Ø 914mm
Optional Equipment:	Winches. 2-8 point mooring system
	Crawler cranes and knuckle-boom cranes
	Hydraulic spud lifters
	Cabin, Containers, Welfare Units
	Generators
	Fuel bowsers
	Lighting
	Counter pollution equipment
	Deck protection
	Hand railing





GENERAL

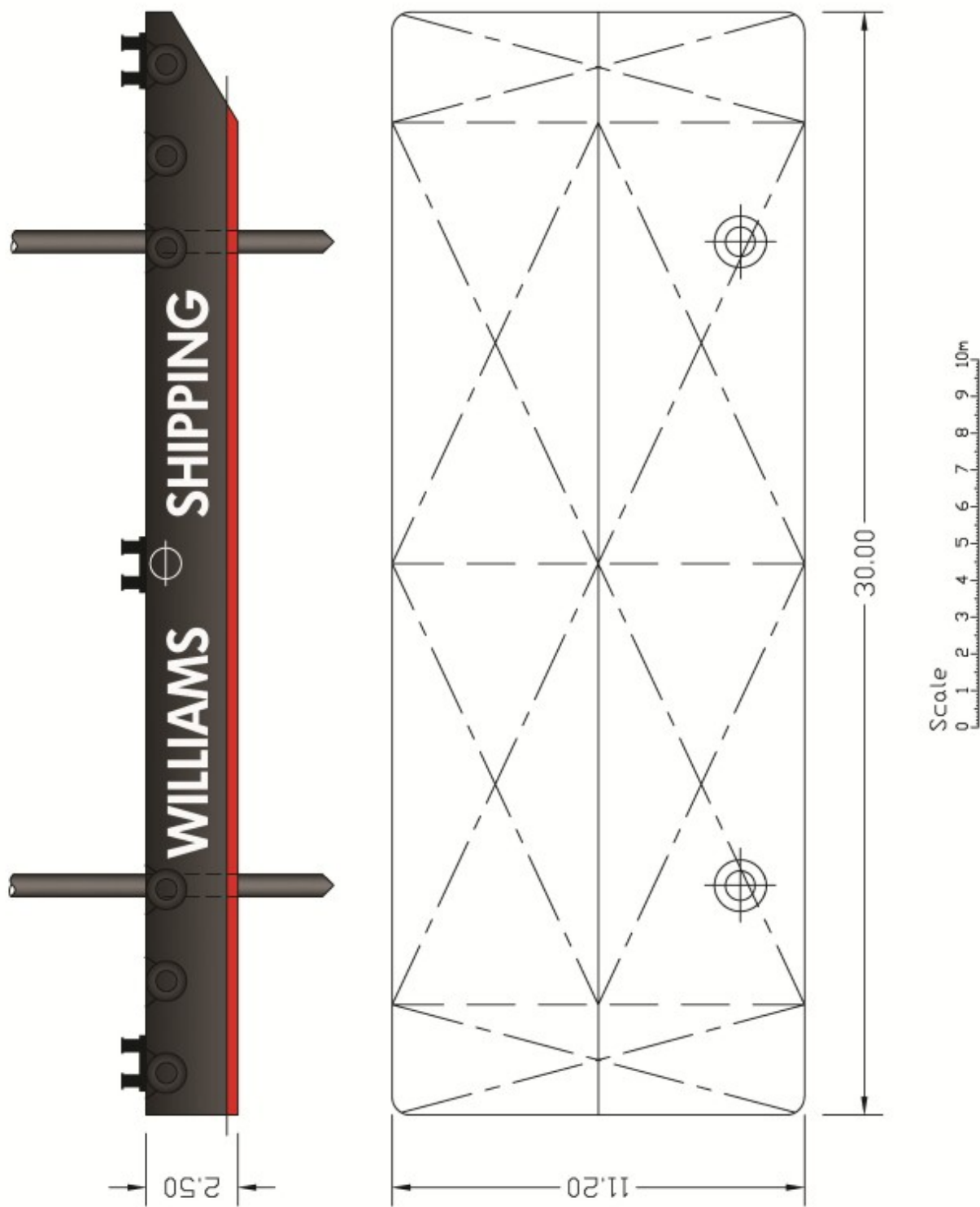
Type of Vessel:	Flat top pontoon
Builder:	Neptune Marine Services
Build Date, Place:	2002, Arkangelsk, Russia
Class:	Bureau Veritas 1 3/3 (-) Pontoon Deep Sea
Certification:	International Loadline

DIMENSIONS

Length O.A.:	50.0m
Beam O.A.:	14.0m
Moulded Depth:	3.0m
Light Draft:	0.47m
Loaded Draft:	2.32m
Deck Load:	6 tons/m ²
DWT:	1280t to summer load-line
Lightship Displacement:	279.6t

DECK EQUIPMENT

Spud Legs:	2 x 12m-20m Ø 607mm (25mm wall thickness)
Optional Equipment:	Winches.2-8 point mooring system
	Crawler cranes and knuckle-boom cranes
	Hydraulic spud lifters
	Cabins, Containers, Welfare Units
	Generators
	Fuel bowzers
	Lighting
	Counter pollution equipment
	Deck protection
	Hand railing





GENERAL

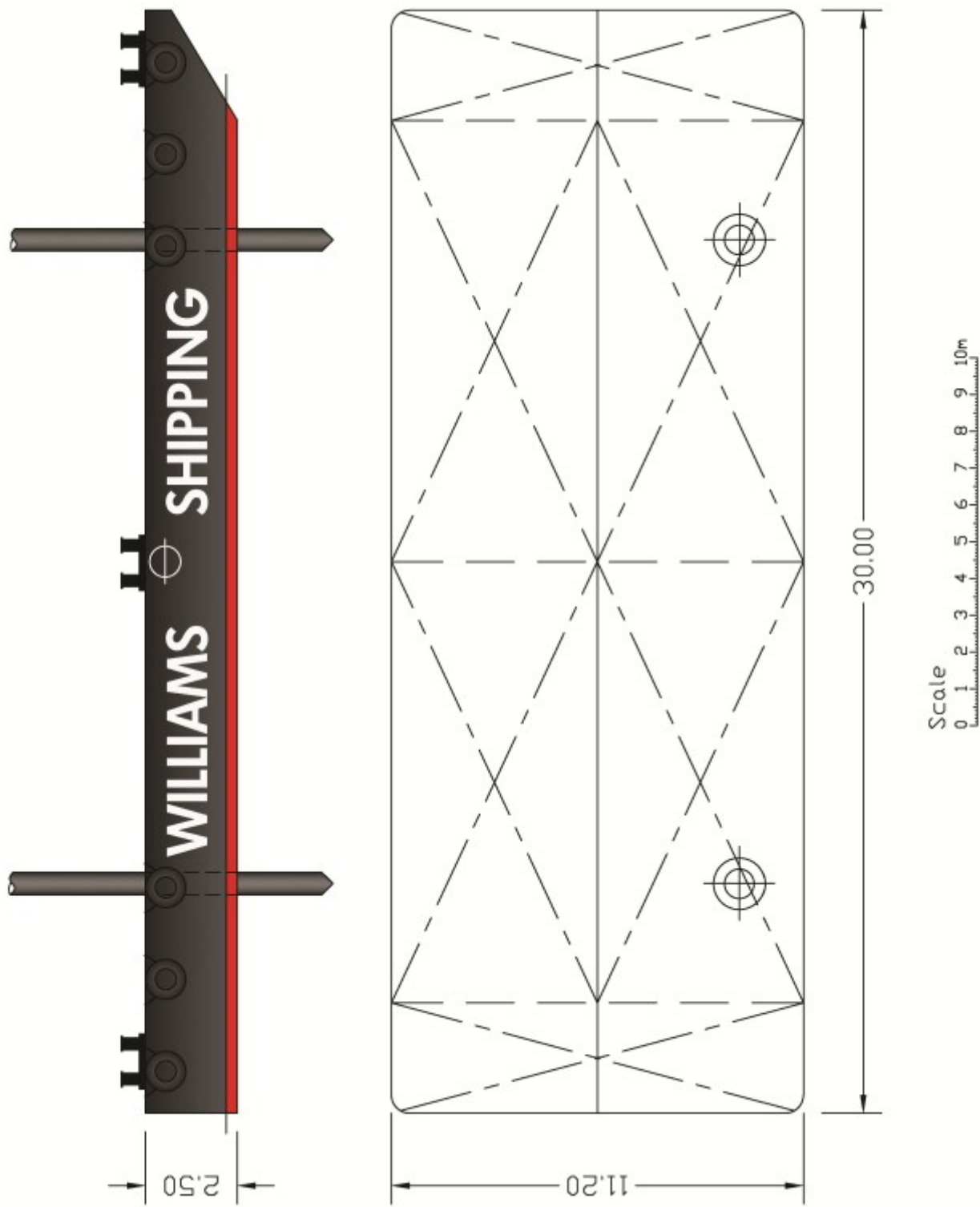
Type of Vessel:	Flat top pontoon
Builder:	Neptune Marine Services
Build Date, Place:	2011, Ulianovsk, Russia
Class:	Bureau Veritas I 3/3 (I) Pontoon deep sea
Certification:	International Loadline

DIMENSIONS

Length O.A.:	30.0m
Beam O.A.:	11.2m
Moulded Depth:	2.5m
Light Draft:	0.3m
Loaded Draft:	1.96m
Deck Load:	6 tons/m ²
DWT:	491 t to summer load-line
Lightship Displacement:	138t

DECK EQUIPMENT

Spud Legs:	2 x 12m-20m Ø 607mm (25mm wall thickness)
Optional Equipment:	Winches. 2-8 point mooring system
	Crawler cranes and knuckle-boom cranes
	Hydraulic spud lifters
	Cabins, Containers, Welfare Units
	Generators
	Fuel bowzers
	Lighting
	Counter pollution equipment
	Deck protection
	Hand railing





GENERAL

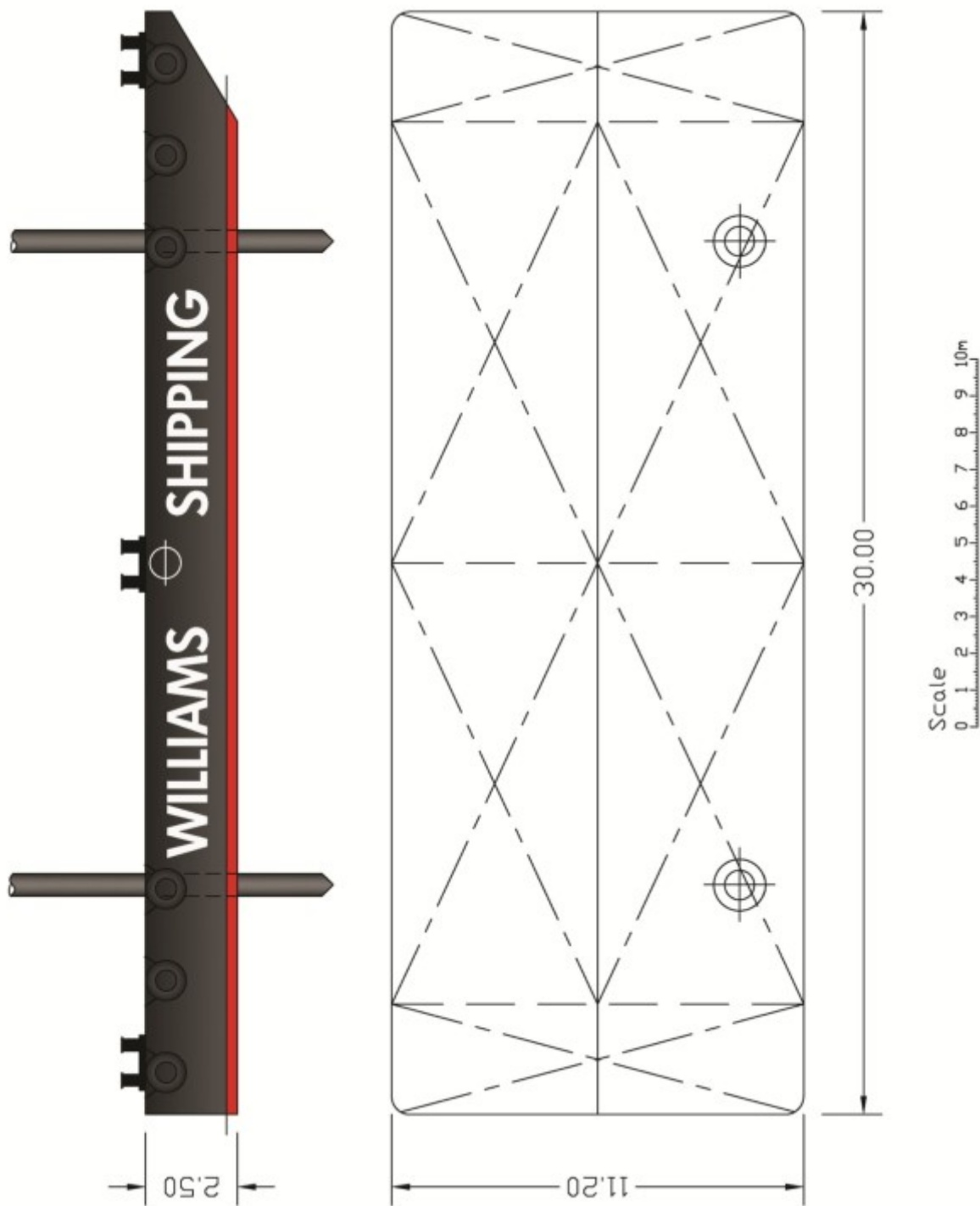
Type of Vessel:	Flat top pontoon
Builder:	Neptune Marine Services
Build Date, Place:	2007, China
Class:	Bureau Veritas I 3/3 () Pontoon deep sea
Certification:	International Loadline

DIMENSIONS

Length O.A.:	30.0m
Beam O.A.:	11.2m
Moulded Depth:	2.5m
Light Draft:	0.3m
Loaded Draft:	1.96m
Deck Load:	6 tons/m ²
DWT:	491 t to summer load-line
Lightship Displacement:	138t

DECK EQUIPMENT

Spud Legs:	2 x 12m-20m Ø 607mm (25mm wall thickness)
Optional Equipment:	Winches. 2-8 point mooring system
	Crawler cranes and knuckle-boom cranes
	Hydraulic spud lifters
	Cabins, Containers, Welfare Units
	Generators
	Fuel bowsers
	Lighting
	Counter pollution equipment
	Deck protection
	Hand railing





GENERAL

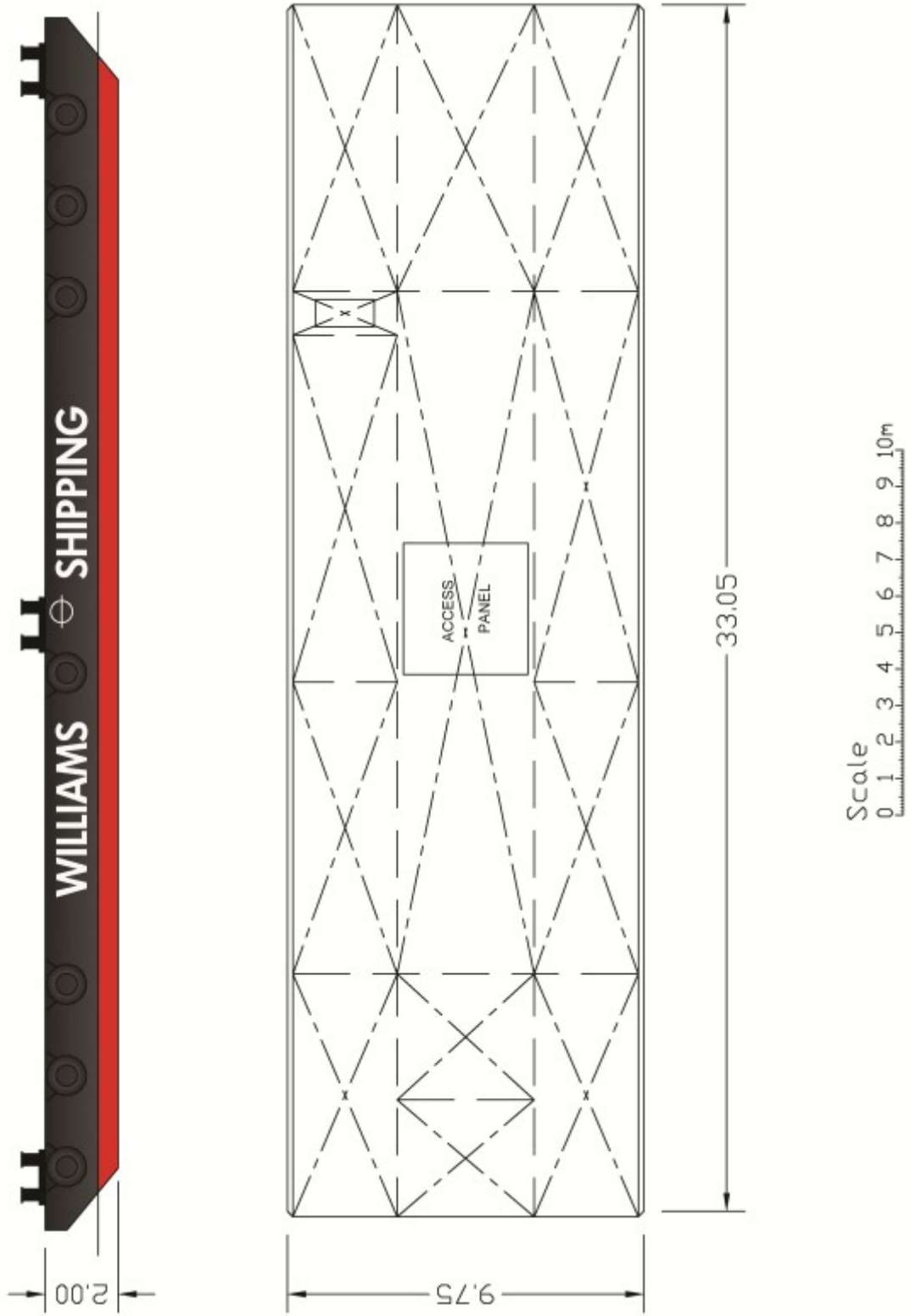
Type of Vessel:	Flat top pontoon
Builder:	Neptune Marine Services
Build Date, Place:	2000, Arkangelsk, Russia
Class:	Bureau Veritas I 3/3 (-) Pontoon deep sea
Certification:	International Loadline

DIMENSIONS

Length O.A.:	30.0m
Beam O.A.:	11.2m
Moulded Depth:	2.5m
Light Draft:	0.3m
Loaded Draft:	1.96m
Deck Load:	6 tons/m ²
DWT:	491t to summer load-line
Lightship Displacement:	138t

DECK EQUIPMENT

Spud Legs	2 x 12m-20m Ø 607mm (25mm wall thickness)
Optional Equipment:	Winches. 2-8 point mooring system
	Crawler cranes and knuckle-boom cranes
	Hydraulic spud lifters
	Cabins, Containers, Welfare Units
	Generators
	Fuel bowsers
	Lighting
	Counter pollution equipment
	Deck protection
	Hand railing





GENERAL

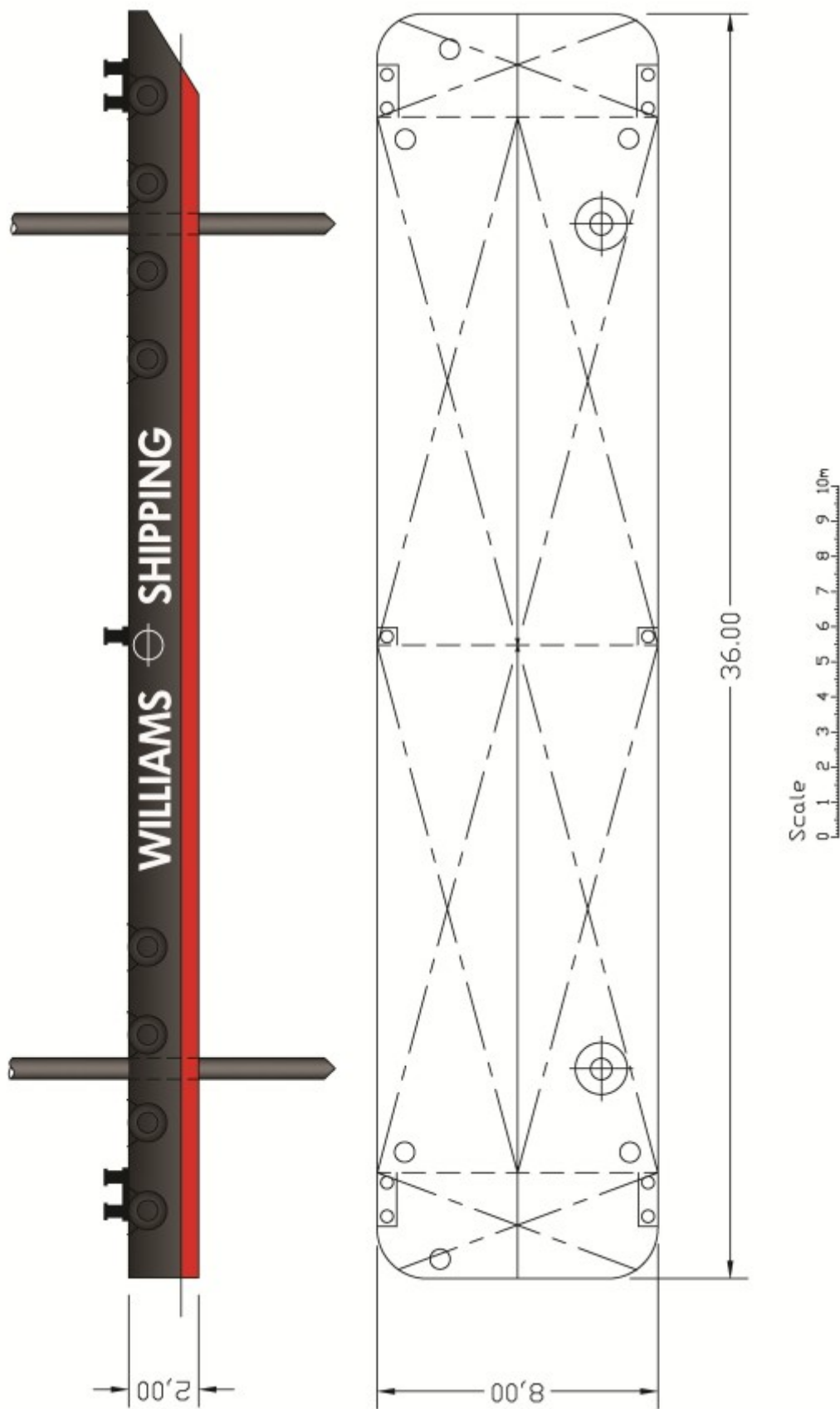
Type of Vessel:	Flat top pontoon with 4-point mooring system
Build Place:	UK
Class:	MCA
Certification:	UK Load Line Exemption Certificate

DIMENSIONS

Length O.A.:	33.2m
Beam O.A.:	9.5m
Moulded Depth:	2.0m
Loaded Draft:	1.15m (with 50t crane)
DWT:	152t
Lightship Displacement:	179.5t

DECK EQUIPMENT

4-point mooring system:	2 x 5t double drum winches with manual brakes 1 x diesel/hydraulic power-pack Gardiner 6LXD 4 x roller fairleads Various deck sheaves
Optional Equipment:	Additional Winches. 2-8 point mooring system Crawler cranes and knuckle-boom cranes Hydraulic spud lifters Cabins, Containers, Welfare Units Generators Fuel bowsers Lighting Counter pollution equipment Deck protection Hand railing





GENERAL

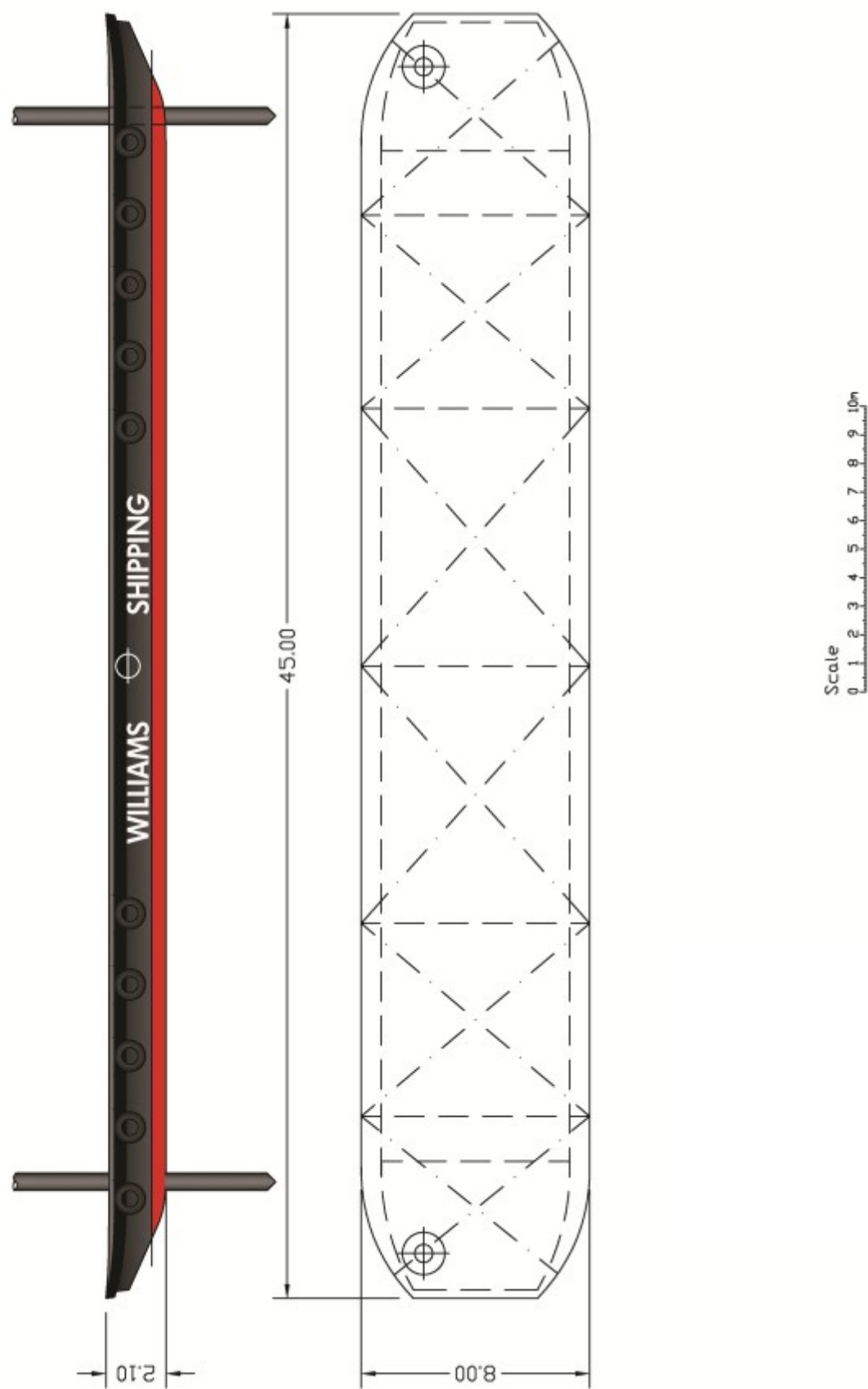
Type of Vessel:	Flat top pontoon
Builder:	Neptune Marine Services
Build Date, Place:	2003, Arkangelsk, Russia
Class:	Bureau Veritas I 3/3 () Pontoon deep sea
Certification:	International Loadline

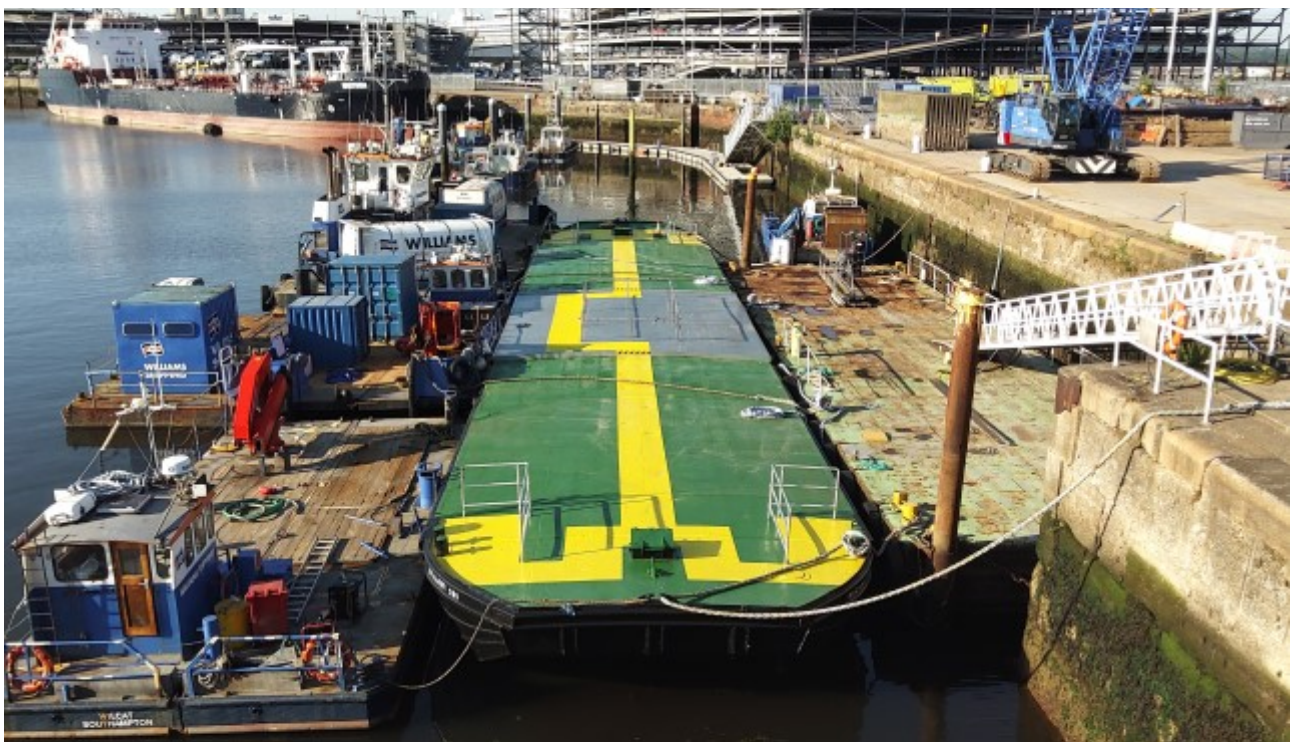
DIMENSIONS

Length O.A.:	36.0m
Beam O.A.:	8.0m
Moulded Depth:	2.0m
Light Draft:	0.40m
Loaded Draft:	1.43m
Deck Load:	6 tons/m ²
DWT:	282.5t to summer load-line
Lightship Displacement:	114.46t

DECK EQUIPMENT

Spud Legs:	2 x 12m-20m Ø 607mm (25mm wall thickness)
Optional Equipment:	Winches.2-8 point mooring system
	Crawler cranes and knuckle-boom cranes
	Hydraulic spud lifters
	Cabins, Containers, Welfare Units
	Generators
	Fuel bowsers
	Lighting
	Counter pollution equipment
	Deck protection
	Hand railing





GENERAL

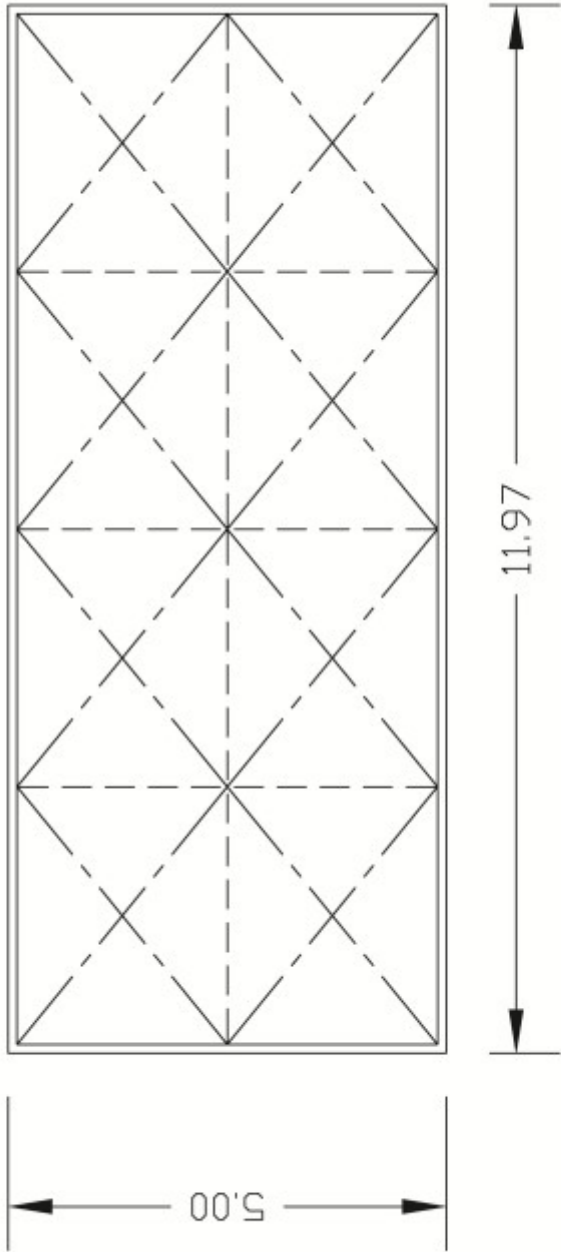
Type of Vessel:	Flat top pontoon
Builder:	N.A. Bernard, Amsterdam
Build Date, Place:	1971, The Netherlands
Class:	MCA
Certification:	International Loadline

DIMENSIONS

Length O.A.:	45.1m
Beam O.A.:	8.0m
Moulded Depth:	2.0m
Light Draft:	0.50m
Loaded Draft:	1.33m
DWT:	255t to summer load line
Lightship Displacement:	130t

DECK EQUIPMENT

Spud Legs:	2 x 12m-18m Ø 405mm (20mm wall thickness)
Optional Equipment:	Winches. 2-8 point mooring system
	Crawler cranes and knuckle-boom cranes
	Hydraulic spud lifters
	Cabins, Containers, Welfare Units
	Generators
	Fuel bowzers
	Lighting
	Counter pollution equipment
	Deck protection
	Hand railing





GENERAL

Type of Vessel:	Flat top pontoon, road transportable
Build Place:	UK,
Class:	MCA
Certification:	Workboat Code Cat 3 (20 miles)

DIMENSIONS

Length O.A.:	12.2m
Beam O.A.:	4.8m
Moulded Depth:	1.2m
Light Draft:	0.24m
Loaded Draft:	0.71m
DWT:	20.0t to summer load-line
Lightship Displacement:	23.35t

DECK EQUIPMENT

Optional Equipment:	Winches. 2-8 point mooring system
	Crawler cranes and knuckle-boom cranes
	Hydraulic spud lifters
	Cabins, Containers, Welfare Units
	Generators
	Fuel Bowsers
	Lighting
	Counter pollution equipment
	Deck protection
	Hand railing

LINKFLOTES



SPECIFICATIONS:

Dimensions (l x w x h) (each)	5272 x 2428 x 1230mm
Weight:	3500kg
Max Load when uniformly distributed:	20kN/m ²
Freeboard under load (uniformly distributed, 95kN):	225mm
Effective dimensions (coupler to coupler) (l x w)	5410 x 2565mm
Supplied with pins and railings	

RIBS



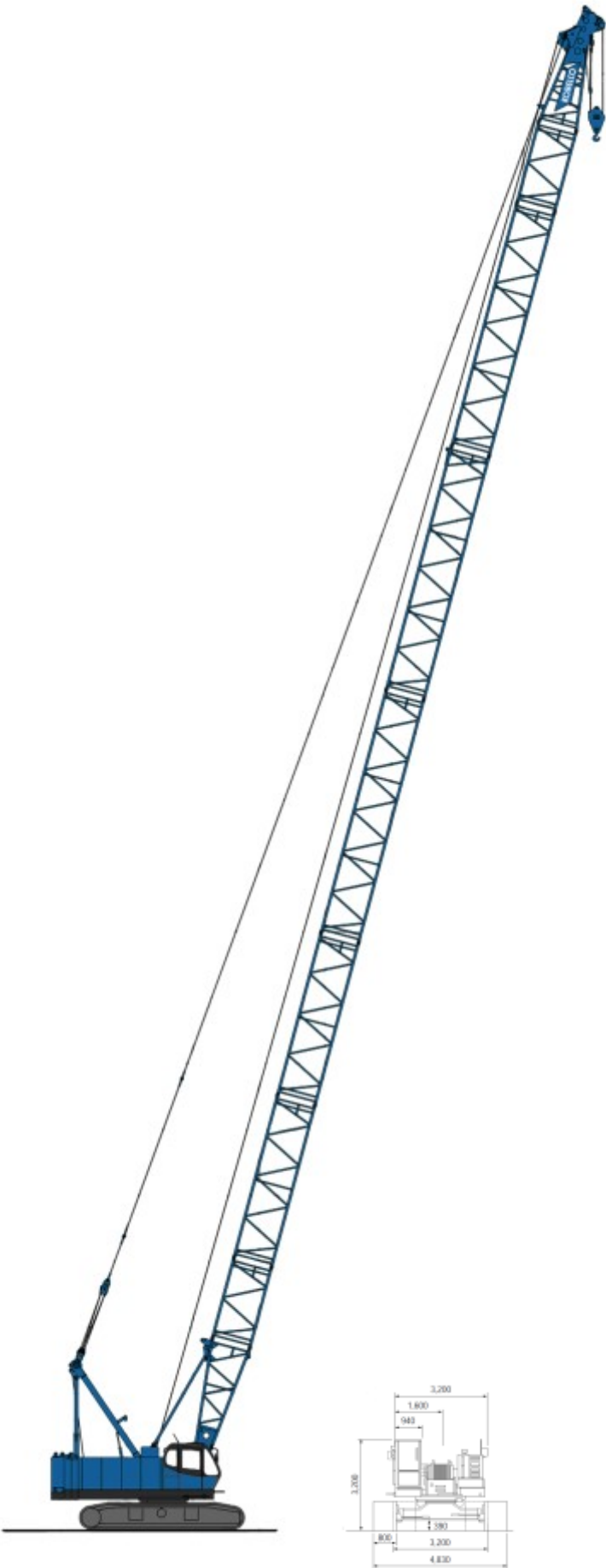
We can provide a full range of RIBs / safety boats varying in size from 2.8m to 15m to cover all requirements. Boats with water jet drive are available where vessels with a shallow draft are important.

Our RIBs are frequently used to support inland waterways, inshore and offshore commercial operations.

Crew can be provided for both long and short term contracts, with crews available for around-the-clock shifts. We are also able to charter 'bareboat', for you to provide your own crew.

CRANE

70T HYDRAULIC CRAWLER CRANE



CRANE

70T HYDRAULIC CRAWLER CRANE



GENERAL

Type of Crane: Hydraulic Crawler Crane
 Builder / Model: Kobelco CKE 700
 Build Date, Place: 2009, Japan
 Engine: Hino JO8E-TM 159kW@2000rpm

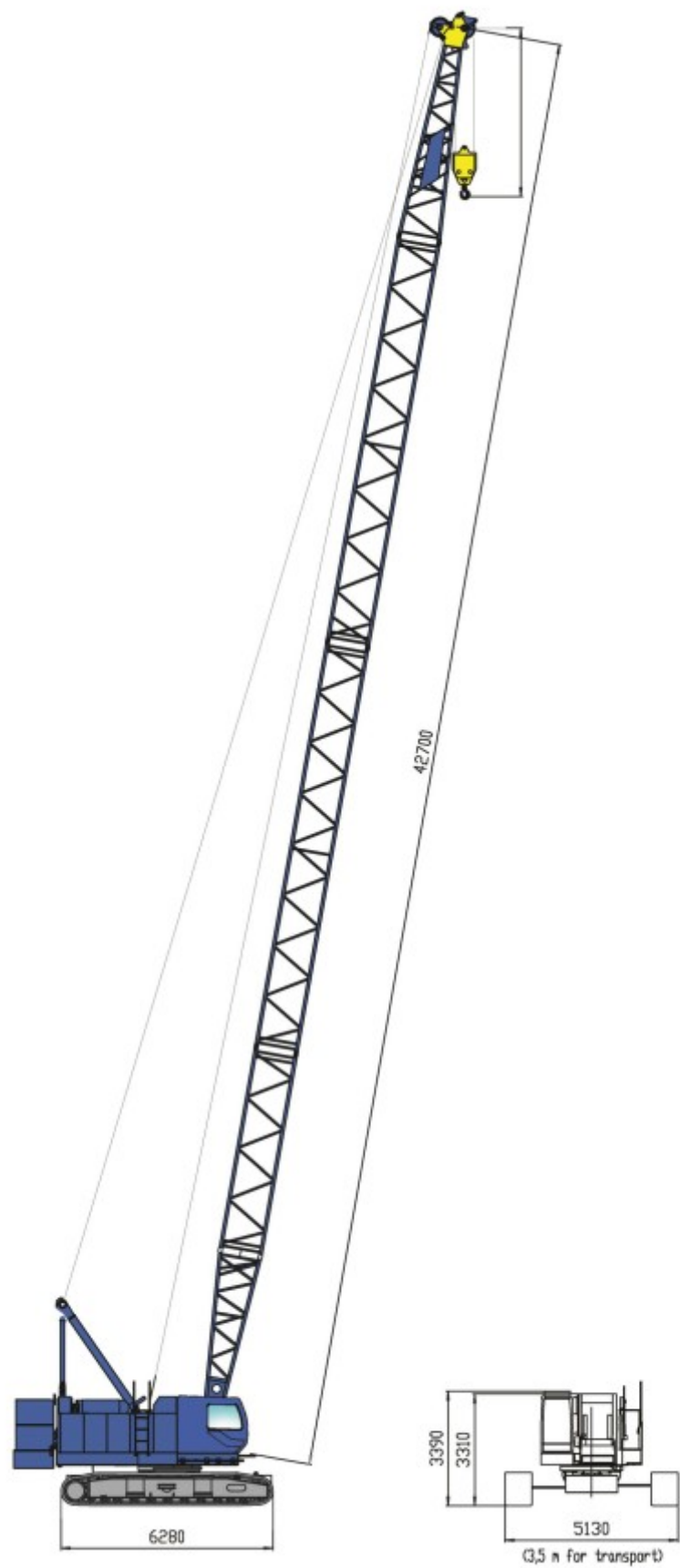
DIMENSIONS

Weight: 67t (inc 47.2t boom)
 Boom Length: 9.1—54.9 m
 Width: 4.83m
 Height (excluding a-frame): 3.18m

Working Radius (m)	Boom Length (m)								
	9.1	12.2	18.3	24.4	30.5	36.6	42.7	48.8	54.9
3.1	70.0								
4.0	65.5	65.0							
4.1	65.0	65.0							
4.5	59.1	59.1	4.7/49.8						
5.0	52.6	51.7	46.0						
6.0	39.4	39.3	37.1	33.8	6.8/27.3				
8.0	24.8	25.6	25.4	24.6	23.0	21.5	8.9/18.0		
10.0	9.2/17.7	18.8	18.6	18.4	18.0	16.9	15.9	10.5/13.7	11.0/12.6
14.0			11.9	11.6	11.5	11.3	10.9	10.2	9.6
18.0			17.1/9.0	8.3	8.1	7.9	9.2	7.4	6.9
22.0				6.3	6.1	5.9	5.7	5.5	5.2
26.0					4.8	4.6	4.4	4.1	3.9
30.0						3.6	3.4	3.1	2.9
34.0						33.0/3.0	2.7	2.4	2.0
36.0							2.4	2.1	1.7
38.0							2.0	1.7	1.4
40.0							38.3/1.9	1.4	1.1
42.0								1.2	

CRANE

100T HYDRAULIC CRAWLER CRANE



CRANE

100T HYDRAULIC CRAWLER CRANE



GENERAL

Type of Crane: Hydraulic Crawler Crane
 Builder / Model: Kobelco CKE 900G
 Build Date, Place: 2014, Japan
 Engine: Hino JO8E-UV 213Kw@2100rpm

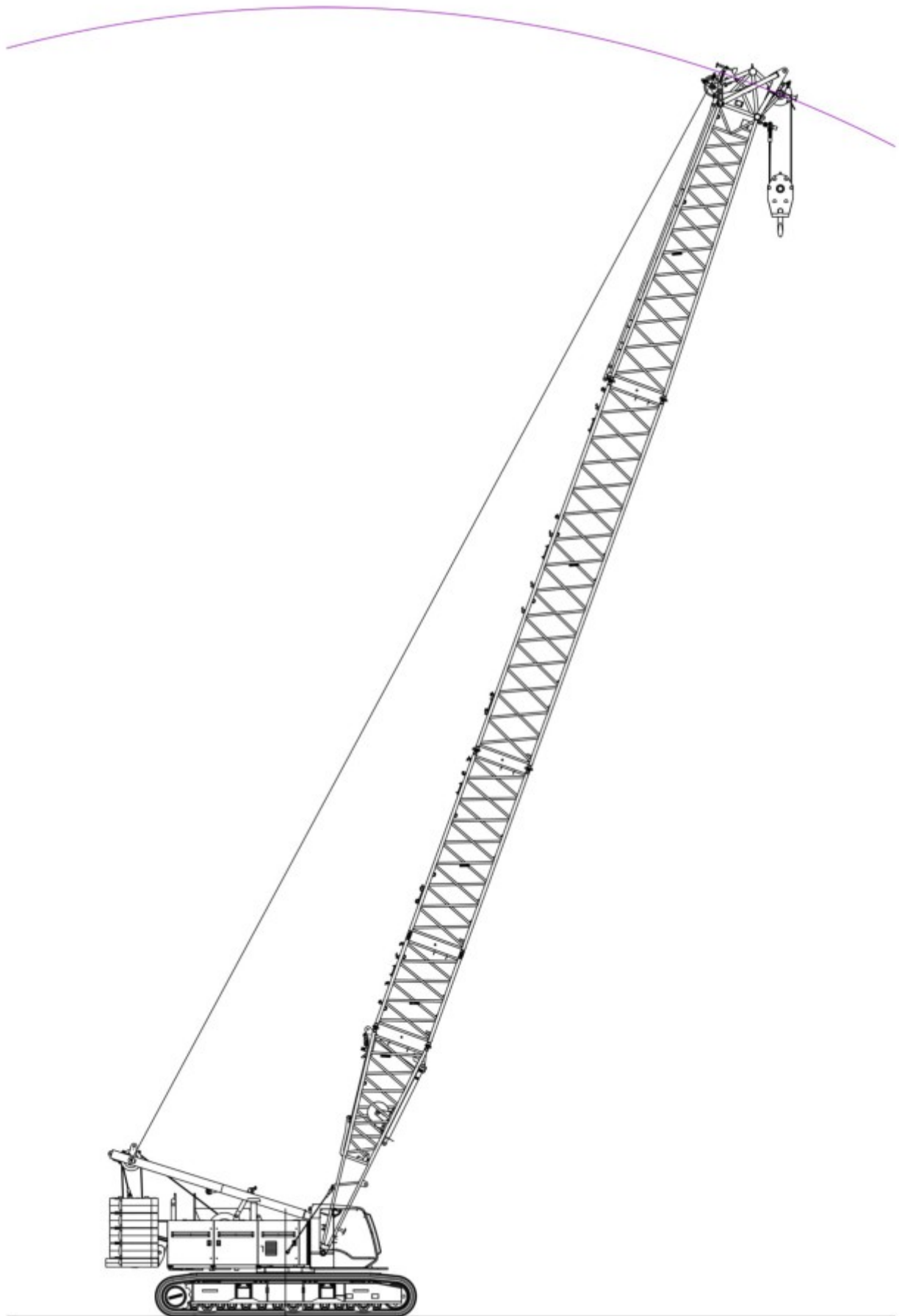
DIMENSIONS

Weight: 93t (inc 42.7m boom)
 Boom Length: 12.2m - 42.7m
 Width: 5.13m
 Height (excluding a frame): 3.31m

Working Radius (m)	Boom Length (m)										
	12.2	15.2	18.3	21.3	24.4	27.4	30.5	33.5	36.6	39.6	42.7
3.6	100.0										
3.9	90.0	88.9	89.7								
4.0	89.0	88.9	88.7	4.3m/ 68.4							
4.5	79.6	79.5	79.4	68.4	4.7m/ 68.4						
5.0	72.1	71.9	71.8	68.4	67.6	5.1m/ 57.0					
5.5	65.8	65.7	65.5	63.6	60.6	57.0	5.6m/ 54.0				
6.0	60.5	60.3	59.9	57.5	54.9	52.7	50.5	45.6	6.4m/ 41.9	6.8m/3 4.2	
7.0	48.6	48.5	48.4	48.1	46.2	44.5	42.9	41.5	40.0	34.2	7.3m/ 31.9
8.0	39.9	39.8	39.7	39.9	39.8	38.5	37.2	36.1	35.0	33.9	31.4
9.0	33.8	33.7	33.6	33.8	33.6	33.6	32.8	31.9	31.0	30.1	29.2
10.0	29.3	29.2	29.1	29.2	29.1	29.0	28.9	28.5	27.7	27.0	26.2
12.0	11.8m/ 22.9	22.9	22.8	22.9	22.8	22.7	22.6	22.6	22.5	22.3	21.7
14.0		18.8	18.6	18.8	18.6	18.5	18.4	18.4	18.3	18.3	18.1
16.0		14.4m/ 18.1	15.7	15.8	15.7	15.6	15.5	15.4	15.3	15.3	15.2
18.0			17.0m/ 14.5	13.7	13.5	13.4	13.3	13.2	13.1	13.1	12.9
20.0				19.6m/ 12.2	11.8	11.7	11.6	11.5	11.4	11.4	11.2
22.0					10.5	10.4	10.2	10.2	10.0	10.0	9.9
24.0						9.3	9.1	9.1	8.9	8.9	8.7
26.0						24.9m/ 8.8	8.2	8.2	8.0	8.0	7.8
28.0							27.6m/ 7.6	7.4	7.2	7.2	7.0
30.0								6.8	6.6	6.5	6.4
32.0								30.2m/ 6.7	6.0	6.0	5.8
34.0									32.9m/ 5.8	5.5	5.3
36.0										35.5m/ 5.12	4.8
38.0											4.4
40.0											38.1m/ 4.4

CRANE

130T HYDRAULIC CRAWLER CRANES



CRANE

130T HYDRAULIC CRAWLER CRANES



GENERAL

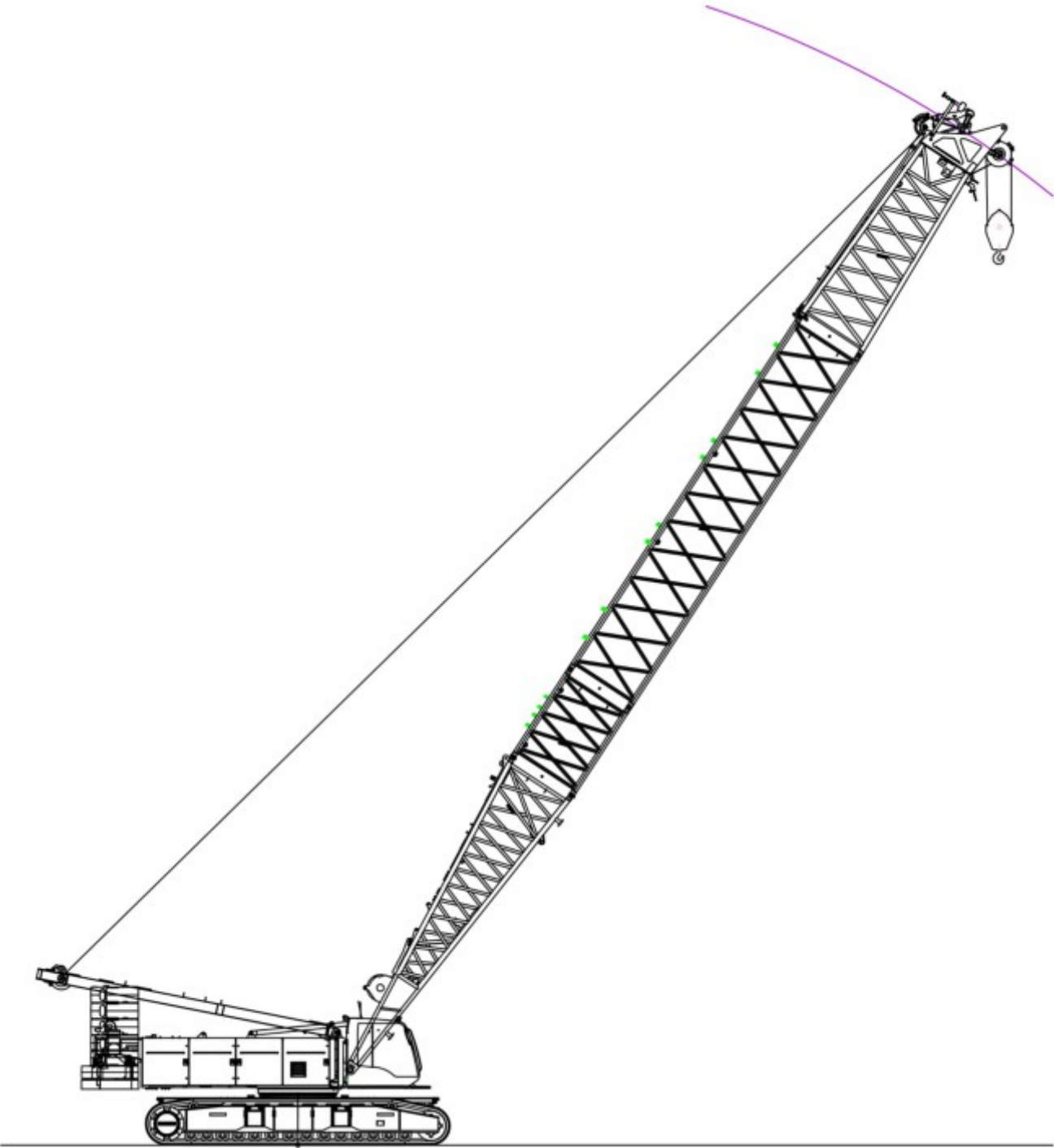
Type of Crane: Hydraulic Crawler Crane (x2)
 Builder / Model: Liebherr LR1130
 Build Date: 2015,2016
 Engine: Liebherr D936 L A6

DIMENSIONS

Weight: 146.1t
 Boom Length: 17m—80 m
 Width: 6.35m
 Height (excluding a frame): 3.64m

Radius	Boom length in (m)												Radius
	17	20	26	32	38	44	50	56	62	68	74	80	
(m)	t	t	t	t	t	t	t	t	t	t	t	t	(m)
3.4	137.2												3.4
4	137.2	133.4											4
5	112.8	108.4	106.9	97.3	79.4								5
6	94.8	97.3	87.0	87.7	74.6	62.0	52.7						6
7	85.7	77.6	77.6	73.9	68.3	55.7	50.3	44.5	36.7	29.1			7
8	73.0	74.1	74.1	67.7	61.9	52.4	46.6	42.5	35.0	28.9	23.4	18.9	8
9	64.9	63.4	63.4	61.2	56.1	48.6	44.1	41.2	33.9	27.7	22.6	18.8	9
10	60.2	56.4	56.4	52.3	52.3	44.4	41.5	39.2	32.9	26.7	21.8	18.0	10
20		25.2	25.2	25.1	24.9	24.5	21.4	22.0	21.0	18.2	15.6	12.9	20
30				14.3	14.1	13.9	13.6	13.4	13.1	12.2	10.2	9.0	30
40						9.0	8.7	8.4	8.1	7.9	7.3	6.8	40
50							5.7	5.5	5.2	4.9	4.6	4.3	50
60									3.3	3.0	2.7	2.4	60
65										2.3			65

Chart is for reference only. For actual lift duty please refer to lift chart in operator's cab or manual.





GENERAL

Type of Crane: Hydraulic Crawler Crane (x 2)
 Builder / Model: Liebherr LR1250
 Build Date, Place: 2013 & 2015
 Engine: Liebherr D936 A7

DIMENSIONS

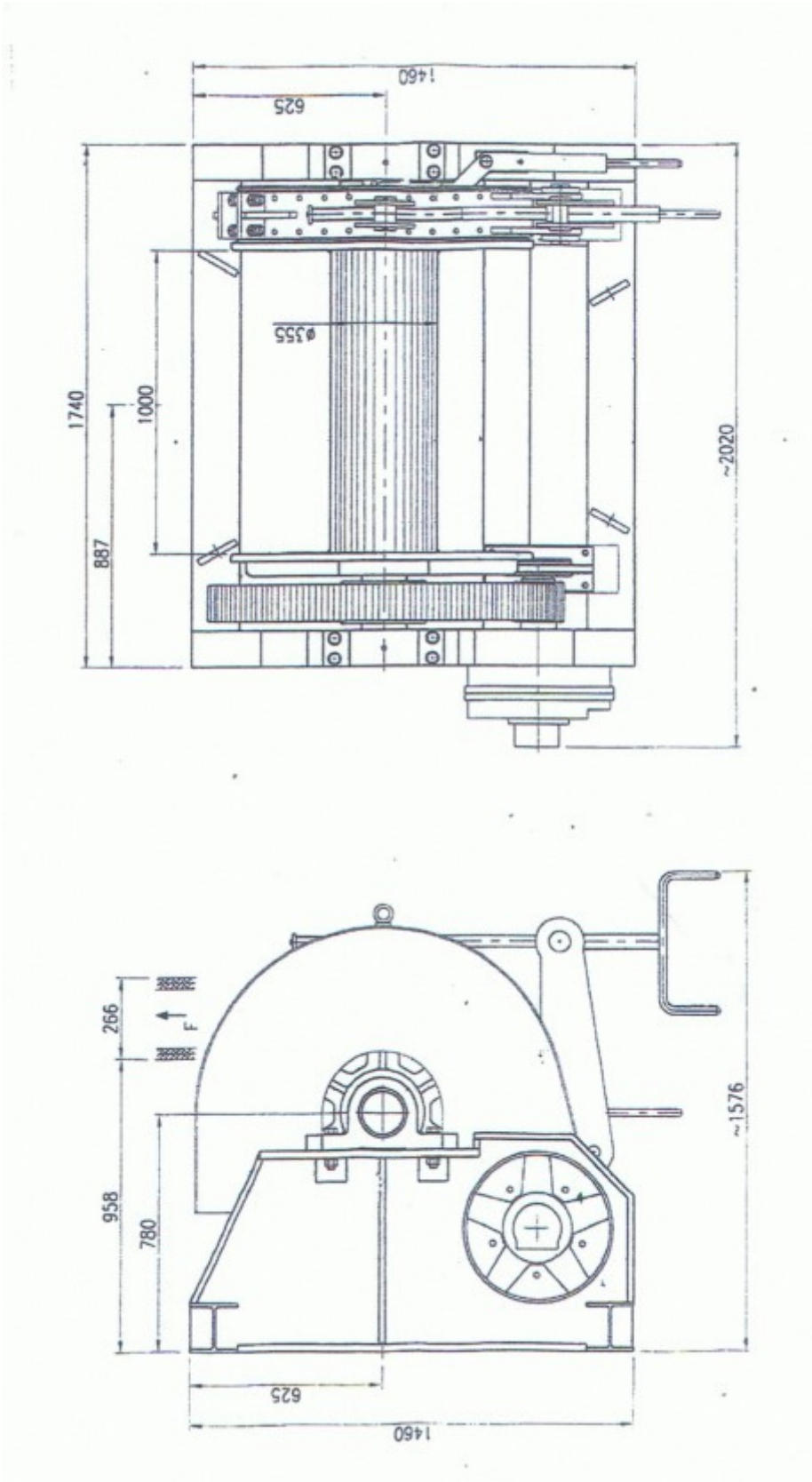
Weight: 210t
 Boom Length: 6m—41m
 Width: 7.00m
 Height (excluding a frame): 4.60m

Outreach (m)	Main boom angle [°]	Rope pulley height [m]	Load capacity [t]
41.0 m Main boom, Load fall point Main boom head (2330-1)			
6.0	85.4	42.9	133.1
7.0	84.0	42.8	126.5
8.9	82.6	42.6	119.1
9.0	81.1	42.5	106.5
10.0	79.7	42.3	95.1
12.0	76.8	41.8	78.1
14.0	73.9	41.2	66.0
16.0	71.0	40.5	56.9
18.0	68.0	39.7	49.4
20.0	64.9	38.7	42.8
22.0	61.7	37.7	37.6
24.0	58.4	36.4	33.3
26.0	55.0	35.0	29.9
28.0	51.4	33.4	26.9
30.0	47.7	31.6	24.4
40.0	21.9	16.3	15.9
41.0	17.3	13.2	15.2

Chart is for reference only. For actual lift duty please refer to lift chart in operator's cab or manual.

WINCHES

20T SINGLE DRUM (x4)



WINCHES

20T SINGLE DRUM (x4)



GENERAL

Type of Winch:	Single Drum Hydraulic Mooring winches
Builder:	PHD
Model:	PHD20TSDMW
Build Date:	2008
Class:	ABS

DIMENSIONS

Depth x Width x Height:	1460mm x 2020mm x 1576mm
Drum Width:	1000mm
Drum Diameter:	1250Mm
Drum Centre Diameter:	355Mm

PERFORMANCE

Pull:	20t
Brake Hold:	50t static (1st layer)
Speed:	10m/min
Capacity:	300m @ 38mm wire

OPERATION

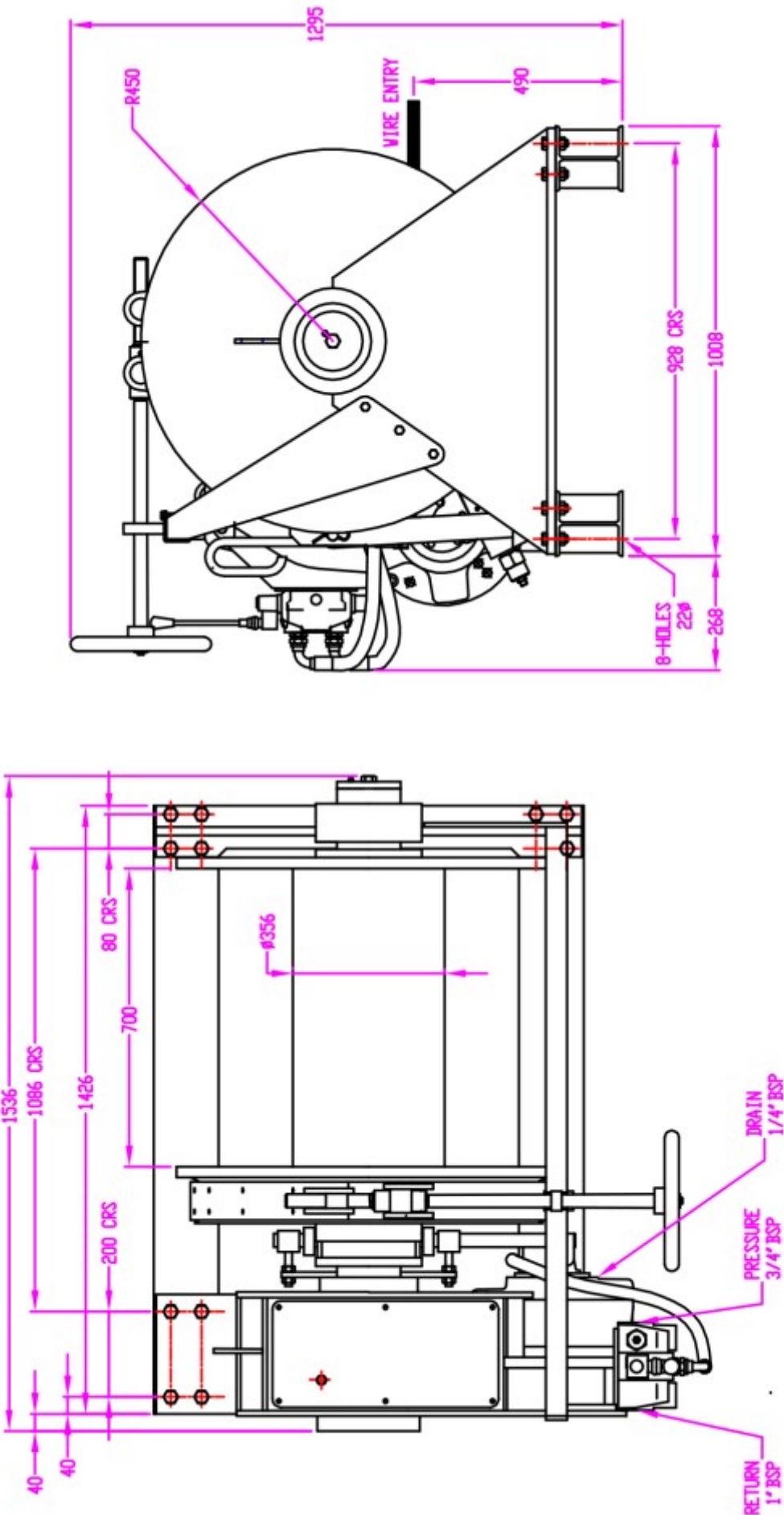
Brakes:	Hydraulic Band brake
Clutches:	Manual claw type
Gearing:	Covered Spur Gear and Pinion
Power Requirement:	55Kw (190Bar 2035cc/rev)
Hydraulic Motor:	Radial Piston Type IAM2000-H5-A1

POWER-PACK (x2)

Type:	Diesel power pack in canopy
Engine:	Ford 2723 6cyl 6ltr
Power:	125hp
	Stand-by power
Cooling:	Radiator cooled
Hydraulic tank:	800ltr
Fuel tank:	Integral

WINCHES

7.5T SINGLE DRUM (x2)



WINCHES

7.5T SINGLE DRUM (x2)



GENERAL

Type of Winch:	Single Drum Hydraulic Mooring winches
Builder:	North Sea Winches
Model:	GM-140
Build Date:	2005

DIMENSIONS

Depth x Width x Height	1008mm x 1536mm x 1295mm
Drum Width:	700mm
Drum Diameter:	900mm
Drum Centre Diameter:	355mm

PERFORMANCE

Pull:	7.5t
Brake Hold:	150% of pull
Speed:	16m/min 1st layer, 24m/min 4th layer
Capacity:	150m @ 24mm wire in 4 layers

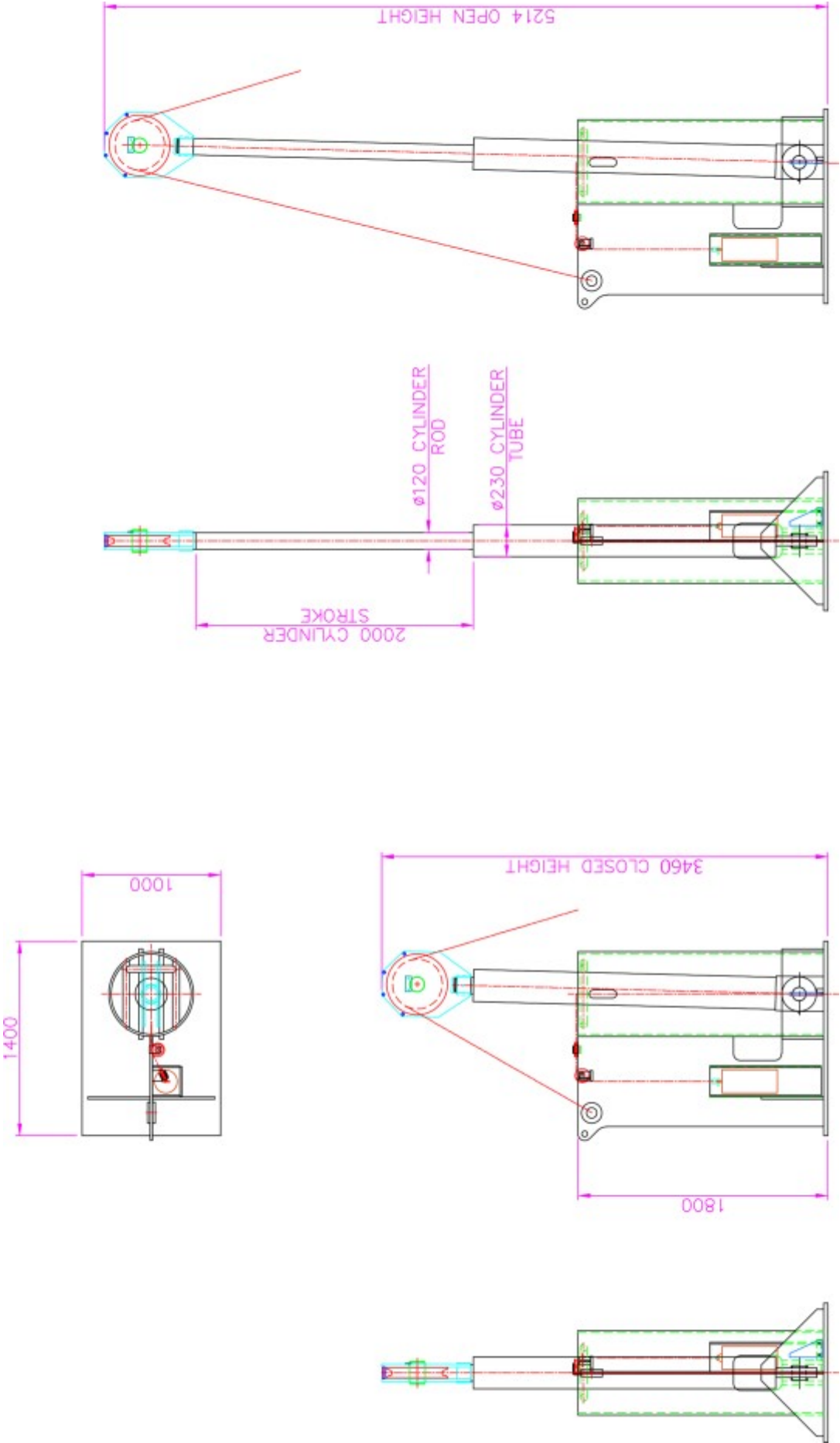
OPERATION

Brakes:	Manual screw brake
Clutches:	Manual dog clutch
Gearing:	
Power Requirement:	30kw (220bar 74lpm)
Hydraulic Motor:	Radial Piston Type SAI GM3600

POWER PACK (x1)

Type:	Diesel power pack in silenced canopy
Engine:	Doosan DaewooDB58 6 cyl 5.8ltr
Power:	87hp/64Kw @ 1800rpm prime power 70Kw stand-by power
Cooling:	Radiator cooled
Hydraulics:	2 x gear pumps—74.7lpm 41.5cc per rev
Hydraulic Tank:	350ltr with 24V oil cooler
Fuel Tank:	8hr running integral fuel tank

HYDRAULIC SPUD LIFTERS



HYDRAULIC SPUD LIFTERS



GENERAL

Type:	Hydraulic spud lifter
Builder:	Target
Model:	9156
Build Date:	2011

DIMENSIONS

Depth:	1400mm
Width:	1000mm
Height:	3214mm
Open Height:	5214mm
Cylinder Stroke:	2000mm

PERFORMANCE

Pull:	18t (limited by wire strops)
-------	------------------------------

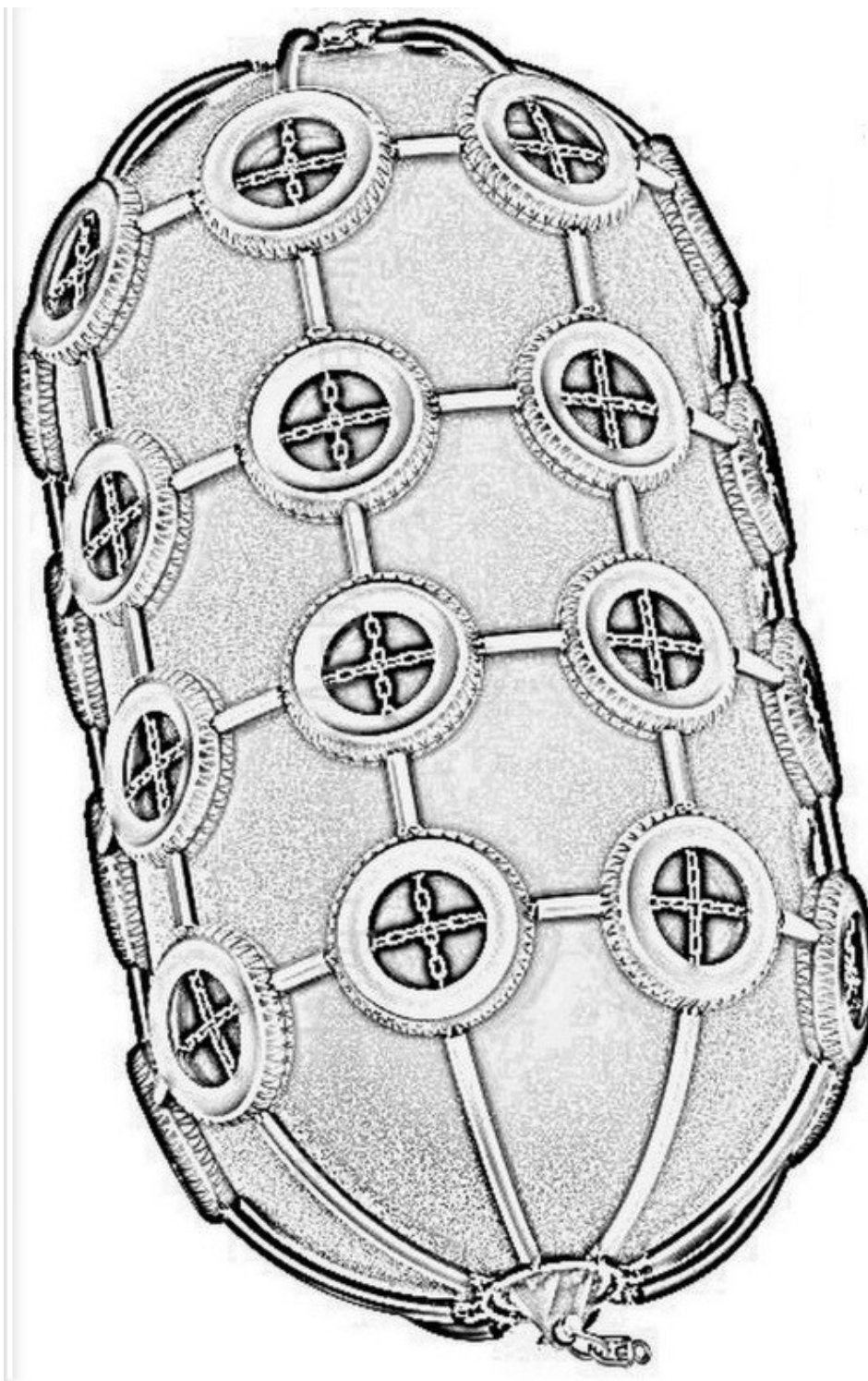
OPERATION

Hand Control Valve

HYDRAULIC POWER PACK

Type:	18.5KW electric/hydraulic power pack
Flow Rate:	75l/min
Hydraulic Tank:	200litres

PNEUMATIC FENDERS



PNEUMATIC FENDERS



GENERAL

Type:	Pneumatic Rubber Fenders
Make:	Yokohama
Year:	2001—2013

DIMENSIONS 2M FENDERS

Length:	2000mm
Diameter (Width):	1200mm

DIMENSIONS 4M FENDERS

Length:	4000mm
Diameter (Width):	2100mm

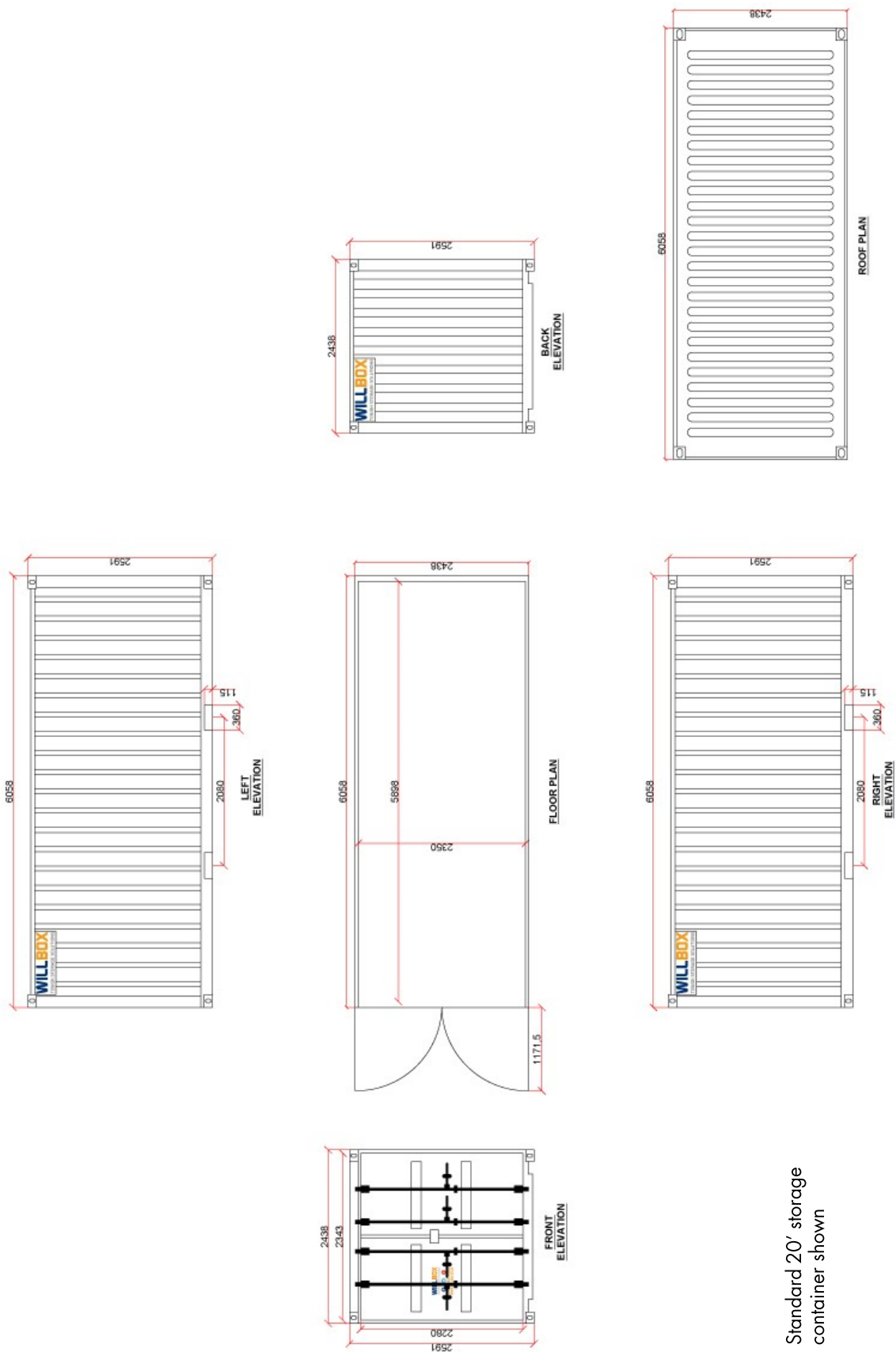
DIMENSIONS 6M FENDERS

Length:	6000mm
Diameter (Width):	3300mm

All fenders are supplied with fore and aft mooring lines

Fenders can be delivered by road transport throughout the UK and N. Europe.

STORAGE CONTAINERS



Standard 20' storage container shown

STORAGE CONTAINERS



Standard 20' storage container shown

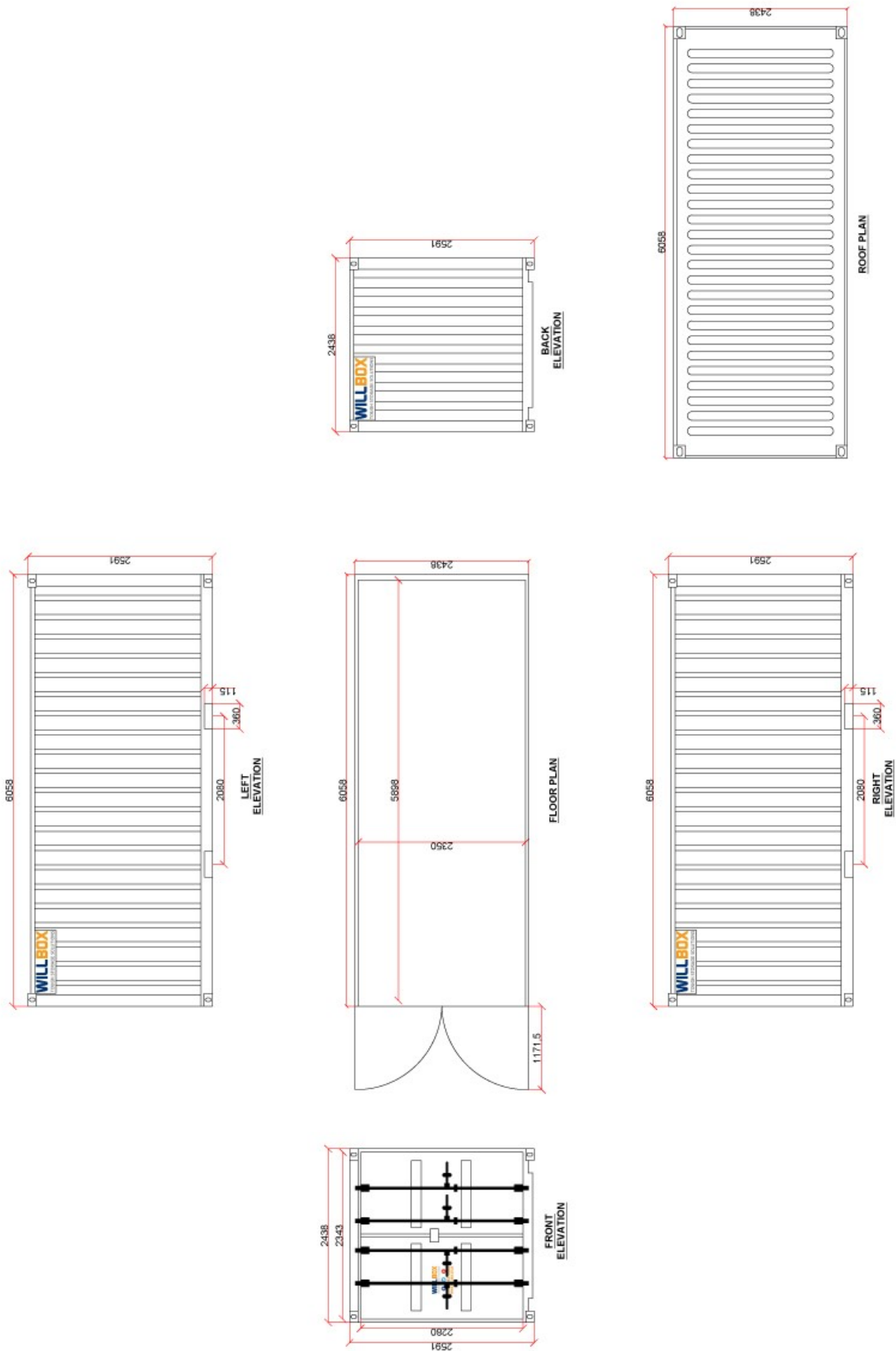
SPECIFICATIONS

	10' Storage	20' Storage	40' Storage
Outside Dimensions (mm):	2991 x 2438 x 2591	6058 x 2438 x 2591	12192 x 2438 x 2591
Outside Dimensions (ft):	10' x 8' x 8'6"	20' x 8' x 8'6"	40' x 8' x 8'6"
Tare Weights (kg):	1300	2230	3470

High cube and other types also available

STATIC WELFARE UNITS

20'



STATIC WELFARE UNITS

20'



SPECIFICATIONS

Outside Dimensions (ft):	20' x 8' x 8'
Tare Weights (kg):	4000
Generator	9.8kVA

POTABLE WATER DELIVERY



FACILITIES

Fresh Water Delivery
FMT Approval
Pump Fully Approved
Delivery 24,000 litres per hour
Connects to 3 intake couplings
South Coast deliveries



BOG MATS



GENERAL

We supply and install an extensive range of timber mats and crane mats from certified and sustainable sources. Our bog mats are manufactured in a range of shapes and sizes to suit most applications. From temporary access roads at festivals to stable bases for cranes and lifting equipment; from pipeline mats suitable for the most extreme conditions to major construction sites, wind and solar farms and demolition projects. We can also produce bespoke timber mats to suit your specific needs.





www.williams-shipping.co.uk
marine@williams-shipping.co.uk
02380 23 7330