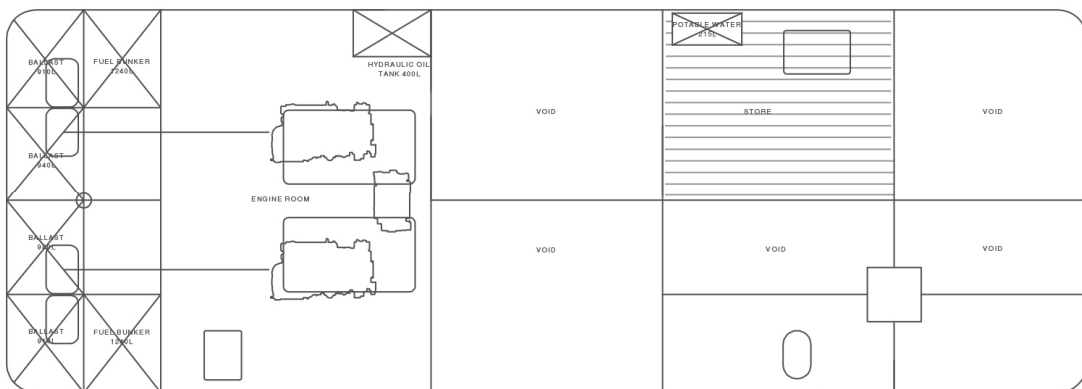
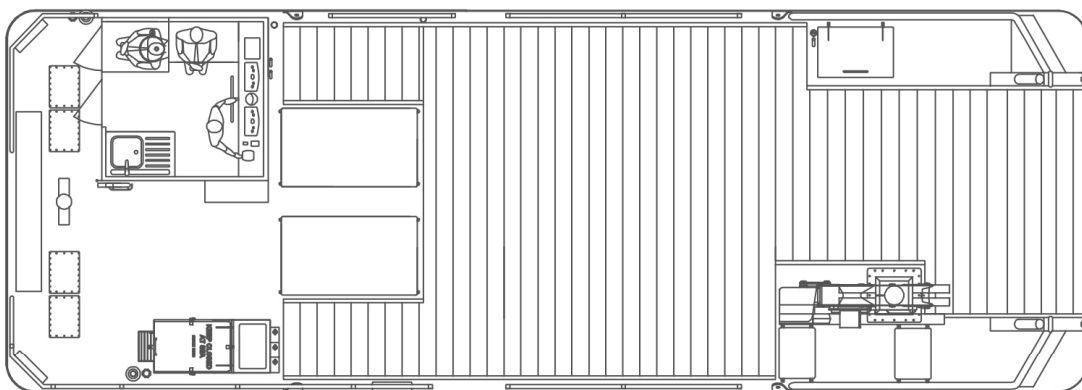
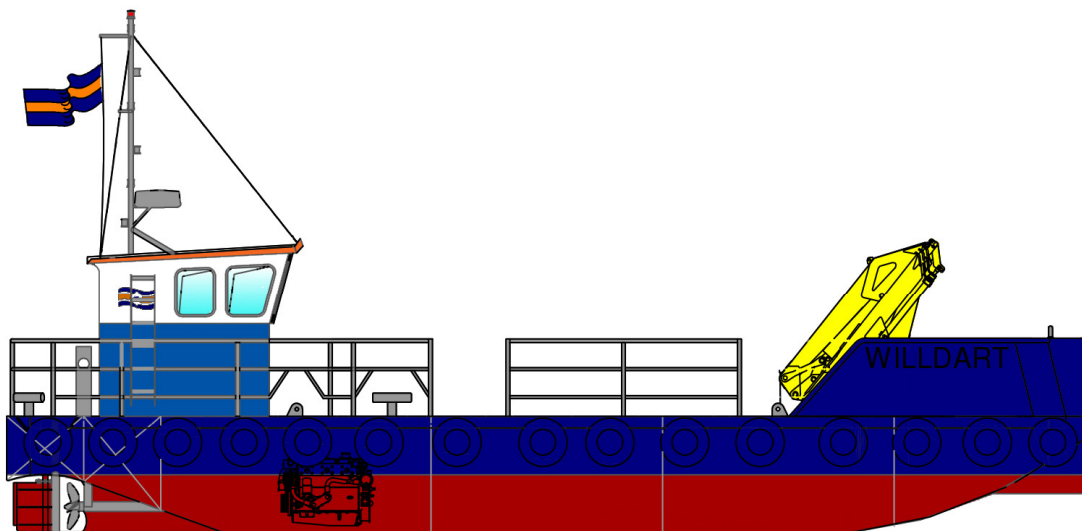


# TUG / WORKBOAT

WILLDART



Scale





## GENERAL

Type of Vessel:	Meercat RT14
Builder:	Meercat Workboats Ltd
Build Date, Place:	2017, UK
Certification:	MCA Workboat Code Cat 3 (20 miles) 2 crew, 4 pax

## DIMENSIONS

Length O.A.:	14.5m
Beam O.A.:	4.85m
Depth at Sides: Draft	1.5m
Aft:	0.8m
Working Air Draft:	3m

## PERFORMANCE

Free Running Speed:	8.5 knots (approx)
Bollard Pull: Deck	3t (approx.)
Carrying Capacity:	14t

## PROPULSION SYSTEM

Main Engines:	2x Doosan Daewoo L136
Total Power:	320HP/235Kw @ 2200rpm
Marine Transmissions:	Newage PRM 1000 2.86:1
Propulsion:	2x 700mm 5-blade pitch props

## AUXILIARY EQUIPMENT

Generator Sets:	BETA—21kVA
Electrical system:	115V / 220V & 415V connections

## DECK EQUIPMENT

Hydraulic Crane:	Bonfiglioni P15000L 4SI 15 t/m with r/c
Capacity:	3.2t@4m / 0.89t@11.6m
Tow Post	
Wooden Deck Protection	
Removable Bow Boards	

## OPTIONAL EQUIPMENT

Burning / Cutting Gear	
Compressors	Optional
Containers and Cabins	6ft to 20ft

## TANK CAPACITIES

Fuel Bunkers:	2x1200ltr
Black Water:	80ltr
Potable Water:	215ltr
Hydraulic Oil:	400ltr
Ballast Water::	4x900ltr

## ACCOMMODATION

Wheelhouse with bench seat and galley unit including sink and hot water supply. Sanitary space above deck

## NAVIGATION & COMMUNICATION EQUIPMENT

Searchlight:	ITT Jabsco
Compass:	Plastimo Olympic + 135
Radar/Chart Plotter:	Raymarine Quantum Radome
Chart Plotter:	Raymarine eS97
GPS:	Raymarine RS 1500
Echo Sounder:	Raymarine I40
VHF Radio:	Icom IC-M423G
Handheld VHF:	Icom IC-M930
AIS:	Raymarine AIS650

## ROAD SPECIFICATION

Length x Breadth:	1 hull @ 14.5m x 4.85m
Transport Weight:	38t